

**Anti-Connexin 25 Antibody**  
Rabbit polyclonal antibody to Connexin 25  
Catalog # AP60565

**Specification**

---

**Anti-Connexin 25 Antibody - Product Information**

Application	WB
Primary Accession	<a href="#">Q6PEY0</a>
Reactivity	Human, Rat
Host	Rabbit
Clonality	Polyclonal
Calculated MW	25860

**Anti-Connexin 25 Antibody - Additional Information**

**Gene ID** 375519

**Other Names**

CX25; Gap junction beta-7 protein; Connexin-25; Cx25

**Target/Specificity**

Recognizes endogenous levels of Connexin 25 protein.

**Dilution**

WB~~WB (1/500 - 1/1000)

**Format**

Liquid in 0.42% Potassium phosphate, 0.87% Sodium chloride, pH 7.3, 30% glycerol, and 0.09% (W/V) sodium azide.

**Storage**

Store at -20 °C. Stable for 12 months from date of receipt

**Anti-Connexin 25 Antibody - Protein Information**

**Name** GJB7

**Synonyms** CX25

**Function**

One gap junction consists of a cluster of closely packed pairs of transmembrane channels, the connexons, through which materials of low MW diffuse from one cell to a neighboring cell.

**Cellular Location**

Cell membrane; Multi-pass membrane protein. Cell junction, gap junction

**Tissue Location**

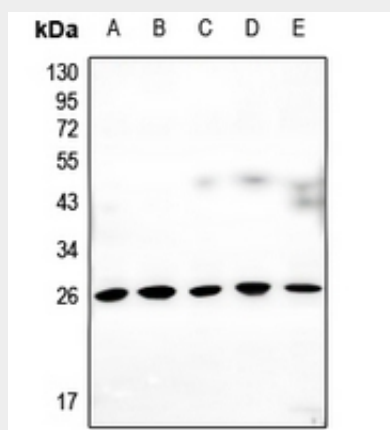
Weakly expressed in placenta.

## Anti-Connexin 25 Antibody - Protocols

Provided below are standard protocols that you may find useful for product applications.

- [Western Blot](#)
- [Blocking Peptides](#)
- [Dot Blot](#)
- [Immunohistochemistry](#)
- [Immunofluorescence](#)
- [Immunoprecipitation](#)
- [Flow Cytometry](#)
- [Cell Culture](#)

## Anti-Connexin 25 Antibody - Images



Western blot analysis of Connexin 25 expression in A549 (A), H1792 (B), HEK293T (C), H9C2 (D), MEF (E) whole cell lysates.

## Anti-Connexin 25 Antibody - Background

KLH-conjugated synthetic peptide encompassing a sequence within the center region of human Connexin 25. The exact sequence is proprietary.