

Anti-Estrogen Receptor beta (pS105) Antibody
Rabbit polyclonal antibody to Estrogen Receptor beta (pS105)
Catalog # AP60563

Specification

Anti-Estrogen Receptor beta (pS105) Antibody - Product Information

Application	WB, IF
Primary Accession	O92731
Other Accession	O08537
Reactivity	Human, Mouse, Rat, Dog
Host	Rabbit
Clonality	Polyclonal
Calculated MW	59216

Anti-Estrogen Receptor beta (pS105) Antibody - Additional Information

Gene ID 2100

Other Names

ESTRB; NR3A2; Estrogen receptor beta; ER-beta; Nuclear receptor subfamily 3 group A member 2

Target/Specificity

Recognizes endogenous levels of Estrogen Receptor beta (pS105) protein.

Dilution

WB~~WB (1/500 - 1/1000), IF/IC (1/100 - 1/500)

IF~~WB (1/500 - 1/1000), IF/IC (1/100 - 1/500)

Format

Liquid in 0.42% Potassium phosphate, 0.87% Sodium chloride, pH 7.3, 30% glycerol, and 0.09% (W/V) sodium azide.

Storage

Store at -20 °C. Stable for 12 months from date of receipt

Anti-Estrogen Receptor beta (pS105) Antibody - Protein Information

Name ESR2

Synonyms ESTRB, NR3A2

Function

Nuclear hormone receptor. Binds estrogens with an affinity similar to that of ESR1/ER-alpha, and activates expression of reporter genes containing estrogen response elements (ERE) in an estrogen- dependent manner (PubMed: 20074560).

Cellular Location

Nucleus {ECO:0000255|PROSITE-ProRule:PRU00407, ECO:0000269|PubMed:19126643, ECO:0000269|PubMed:20074560}

Tissue Location

[Isoform 1]: Expressed in testis and ovary, and at a lower level in heart, brain, placenta, liver, skeletal muscle, spleen, thymus, prostate, colon, bone marrow, mammary gland and uterus Also found in uterine bone, breast, and ovarian tumor cell lines, but not in colon and liver tumors.

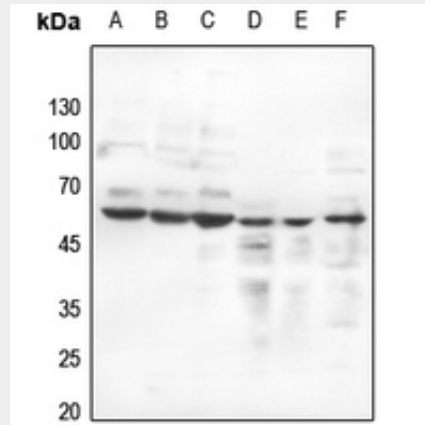
[Isoform 4]: Expressed in the testis. [Isoform 6]: Expressed in testis, placenta, skeletal muscle, spleen and leukocytes, and at a lower level in heart, lung, liver, kidney, pancreas, thymus, prostate, colon, small intestine, bone marrow, mammary gland and uterus. Not expressed in brain.

Anti-Estrogen Receptor beta (pS105) Antibody - Protocols

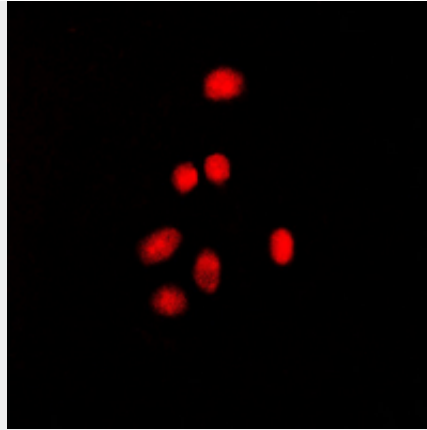
Provided below are standard protocols that you may find useful for product applications.

- [Western Blot](#)
- [Blocking Peptides](#)
- [Dot Blot](#)
- [Immunohistochemistry](#)
- [Immunofluorescence](#)
- [Immunoprecipitation](#)
- [Flow Cytometry](#)
- [Cell Culture](#)

Anti-Estrogen Receptor beta (pS105) Antibody - Images



Western blot analysis of Estrogen Receptor beta (pS105) expression in HEK293T (A), Hela (B), A375 (C), mouse spleen (D), rat spleen (E), rat testis (F) whole cell lysates.



Immunofluorescent analysis of Estrogen Receptor beta (pS105) staining in MCF7 cells. Formalin-fixed cells were permeabilized with 0.1% Triton X-100 in TBS for 5-10 minutes and blocked with 3% BSA-PBS for 30 minutes at room temperature. Cells were probed with the primary antibody in 3% BSA-PBS and incubated overnight at 4 °C in a humidified chamber. Cells were washed with PBST and incubated with a DyLight 594-conjugated secondary antibody (red) in PBS at room temperature in the dark.

Anti-Estrogen Receptor beta (pS105) Antibody - Background

KLH-conjugated synthetic peptide encompassing a sequence within the center region of human Estrogen Receptor beta. The exact sequence is proprietary.