

Anti-Zeta COP Antibody
Rabbit polyclonal antibody to Zeta COP
Catalog # AP60557

Specification

Anti-Zeta COP Antibody - Product Information

Application	WB
Primary Accession	P61923
Other Accession	P61924
Reactivity	Human, Mouse, Rat, Monkey, Bovine
Host	Rabbit
Clonality	Polyclonal
Calculated MW	20198

Anti-Zeta COP Antibody - Additional Information

Gene ID 22818

Other Names

COPZ; Coatomer subunit zeta-1; Zeta-1-coat protein; Zeta-1 COP

Target/Specificity

Recognizes endogenous levels of Zeta COP protein.

Dilution

WB~~WB (1/500 - 1/1000), IH (1/100 - 1/200)

Format

Liquid in 0.42% Potassium phosphate, 0.87% Sodium chloride, pH 7.3, 30% glycerol, and 0.09% (W/V) sodium azide.

Storage

Store at -20 °C. Stable for 12 months from date of receipt

Anti-Zeta COP Antibody - Protein Information

Name COPZ1

Synonyms COPZ

Function

The coatomer is a cytosolic protein complex that binds to dilysine motifs and reversibly associates with Golgi non-clathrin-coated vesicles, which further mediate biosynthetic protein transport from the ER, via the Golgi up to the trans Golgi network. Coatomer complex is required for budding from Golgi membranes, and is essential for the retrograde Golgi-to-ER transport of dilysine-tagged proteins (By similarity). The zeta subunit may be involved in regulating the coat assembly and, hence, the rate of biosynthetic protein transport due to its association-dissociation properties with the coatomer complex (By similarity).

Cellular Location

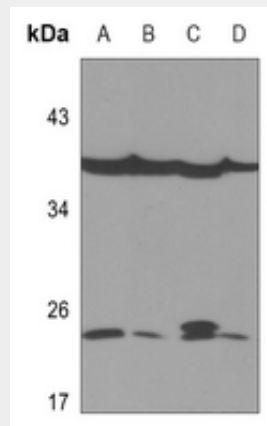
Cytoplasm. Golgi apparatus membrane; Peripheral membrane protein; Cytoplasmic side. Cytoplasmic vesicle, COPI-coated vesicle membrane; Peripheral membrane protein; Cytoplasmic side. Note=The coatomer is cytoplasmic or polymerized on the cytoplasmic side of the Golgi, as well as on the vesicles/buds originating from it.

Anti-Zeta COP Antibody - Protocols

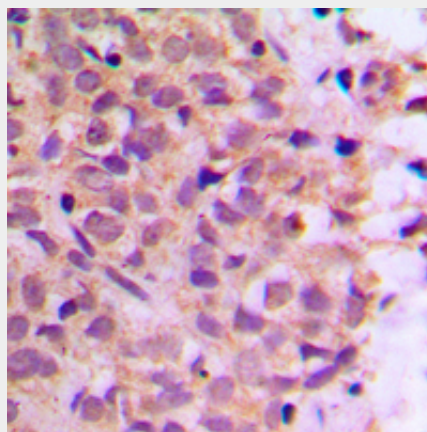
Provided below are standard protocols that you may find useful for product applications.

- [Western Blot](#)
- [Blocking Peptides](#)
- [Dot Blot](#)
- [Immunohistochemistry](#)
- [Immunofluorescence](#)
- [Immunoprecipitation](#)
- [Flow Cytometry](#)
- [Cell Culture](#)

Anti-Zeta COP Antibody - Images



Western blot analysis of Zeta COP expression in mouse liver (A), mouse lung (B), rat liver (C), rat lung (D) whole cell lysates.



Immunohistochemical analysis of Zeta COP staining in human breast cancer formalin fixed paraffin embedded tissue section. The section was pre-treated using heat mediated antigen

retrieval with sodium citrate buffer (pH 6.0). The section was then incubated with the antibody at room temperature and detected using an HRP conjugated compact polymer system. DAB was used as the chromogen. The section was then counterstained with haematoxylin and mounted with DPX.

Anti-Zeta COP Antibody - Background

KLH-conjugated synthetic peptide encompassing a sequence within the N-term region of human Zeta COP. The exact sequence is proprietary.