

Anti-A-RAF Antibody
Rabbit polyclonal antibody to A-RAF
Catalog # AP60536

Specification

Anti-A-RAF Antibody - Product Information

Application	WB
Primary Accession	P10398
Reactivity	Human
Host	Rabbit
Clonality	Polyclonal
Calculated MW	67585

Anti-A-RAF Antibody - Additional Information

Gene ID 369

Other Names

ARAF1; PKS; PKS2; Serine/threonine-protein kinase A-Raf; Proto-oncogene A-Raf; Proto-oncogene A-Raf-1; Proto-oncogene Pks

Target/Specificity

Recognizes endogenous levels of A-RAF protein.

Dilution

WB~~WB (1/500 - 1/1000)

Format

Liquid in 0.42% Potassium phosphate, 0.87% Sodium chloride, pH 7.3, 30% glycerol, and 0.09% (W/V) sodium azide.

Storage

Store at -20 °C. Stable for 12 months from date of receipt

Anti-A-RAF Antibody - Protein Information

Name ARAF

Synonyms ARAF1, PKS, PKS2

Function

Involved in the transduction of mitogenic signals from the cell membrane to the nucleus. May also regulate the TOR signaling cascade. Phosphorylates PFKFB2 (PubMed: 36402789).

Tissue Location

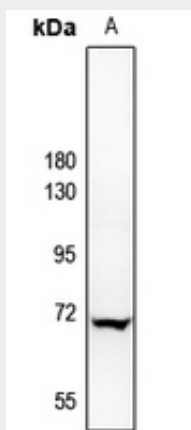
Predominantly in urogenital tissues.

Anti-A-RAF Antibody - Protocols

Provided below are standard protocols that you may find useful for product applications.

- [Western Blot](#)
- [Blocking Peptides](#)
- [Dot Blot](#)
- [Immunohistochemistry](#)
- [Immunofluorescence](#)
- [Immunoprecipitation](#)
- [Flow Cytometry](#)
- [Cell Culture](#)

Anti-A-RAF Antibody - Images



Western blot analysis of A-RAF expression in MCF7 (A) whole cell lysates.

Anti-A-RAF Antibody - Background

KLH-conjugated synthetic peptide encompassing a sequence within the center region of human A-RAF. The exact sequence is proprietary.