

**Anti-UCP3 Antibody**  
Rabbit polyclonal antibody to UCP3  
Catalog # AP60522

## Specification

---

### Anti-UCP3 Antibody - Product Information

Application	WB
Primary Accession	<a href="#">P55916</a>
Other Accession	<a href="#">P56501</a>
Reactivity	Human, Mouse, Rat, Pig, Dog
Host	Rabbit
Clonality	Polyclonal
Calculated MW	34216

### Anti-UCP3 Antibody - Additional Information

**Gene ID** 7352

#### Other Names

SLC25A9; Mitochondrial uncoupling protein 3; UCP 3; Solute carrier family 25 member 9

#### Target/Specificity

Recognizes endogenous levels of UCP3 protein.

#### Dilution

WB~~WB (1/500 - 1/1000)

#### Format

Liquid in 0.42% Potassium phosphate, 0.87% Sodium chloride, pH 7.3, 30% glycerol, and 0.09% (W/V) sodium azide.

#### Storage

Store at -20 °C. Stable for 12 months from date of receipt

### Anti-UCP3 Antibody - Protein Information

**Name** UCP3 {ECO:0000303|PubMed:9180264, ECO:0000312|HGNC:HGNC:12519}

#### Function

Putative transmembrane transporter that plays a role in mitochondrial metabolism via an as yet unclear mechanism (PubMed: [21775425](http://www.uniprot.org/citations/21775425), PubMed: [36114012](http://www.uniprot.org/citations/36114012)). Originally, this mitochondrial protein was thought to act as a proton transmembrane transporter from the mitochondrial intermembrane space into the matrix, causing proton leaks through the inner mitochondrial membrane, thereby uncoupling mitochondrial membrane potential generation from ATP synthesis (PubMed: [11171965](http://www.uniprot.org/citations/11171965), PubMed: [12670931](http://www.uniprot.org/citations/12670931), PubMed: [12670931](http://www.uniprot.org/citations/12670931), PubMed: [12670931](http://www.uniprot.org/citations/12670931)).

[12734183](http://www.uniprot.org/citations/12734183), PubMed:<[9305858](http://www.uniprot.org/citations/9305858)>). However, this function is controversial and uncoupling may not be the function, or at least not the main function, but rather a consequence of more conventional metabolite transporter activity (PubMed:<[11707458](http://www.uniprot.org/citations/11707458)>).

#### Cellular Location

Mitochondrion inner membrane {ECO:0000250|UniProtKB:P56501}; Multi-pass membrane protein

#### Tissue Location

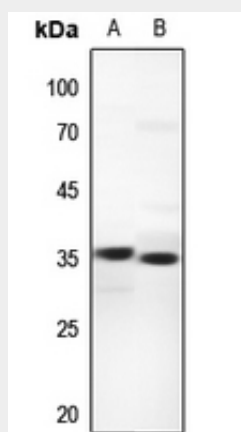
Only in skeletal muscle and heart (PubMed:9305858). Also expressed in white and brown adipose tissues (PubMed:9305858). Is more expressed in glycolytic than in oxidative skeletal muscles

### Anti-UCP3 Antibody - Protocols

Provided below are standard protocols that you may find useful for product applications.

- [Western Blot](#)
- [Blocking Peptides](#)
- [Dot Blot](#)
- [Immunohistochemistry](#)
- [Immunofluorescence](#)
- [Immunoprecipitation](#)
- [Flow Cytometry](#)
- [Cell Culture](#)

### Anti-UCP3 Antibody - Images



Western blot analysis of UCP3 expression in mouse muscle (A), rat kidney (B) whole cell lysates.

### Anti-UCP3 Antibody - Background

KLH-conjugated synthetic peptide encompassing a sequence within the C-term region of human UCP3. The exact sequence is proprietary.