

Anti-CD153 Antibody
Rabbit polyclonal antibody to CD153
Catalog # AP60519**Specification**

Anti-CD153 Antibody - Product Information

Application	WB
Primary Accession	P32971
Other Accession	P32972
Reactivity	Human, Mouse, Rat
Host	Rabbit
Clonality	Polyclonal
Calculated MW	26017

Anti-CD153 Antibody - Additional Information**Gene ID** 944**Other Names**

CD30L; CD30LG; Tumor necrosis factor ligand superfamily member 8; CD30 ligand; CD30-L; CD153

Target/Specificity

Recognizes endogenous levels of CD153 protein.

Dilution

WB~~WB (1/500 - 1/1000)

Format

Liquid in 0.42% Potassium phosphate, 0.87% Sodium chloride, pH 7.3, 30% glycerol, and 0.09% (W/V) sodium azide.

Storage

Store at -20 °C. Stable for 12 months from date of receipt

Anti-CD153 Antibody - Protein Information**Name** TNFSF8**Synonyms** CD30L, CD30LG**Function**

Cytokine that binds to TNFRSF8/CD30. Induces proliferation of T-cells.

Cellular Location

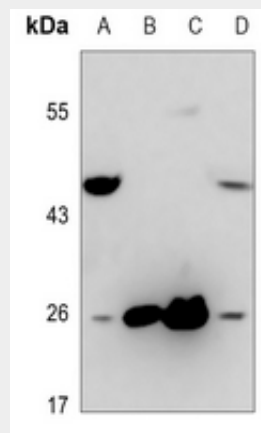
Membrane; Single-pass type II membrane protein.

Anti-CD153 Antibody - Protocols

Provided below are standard protocols that you may find useful for product applications.

- [Western Blot](#)
- [Blocking Peptides](#)
- [Dot Blot](#)
- [Immunohistochemistry](#)
- [Immunofluorescence](#)
- [Immunoprecipitation](#)
- [Flow Cytometry](#)
- [Cell Culture](#)

Anti-CD153 Antibody - Images



Western blot analysis of CD153 expression in mouse liver (A), mouse spleen (B), rat liver (C), rat spleen (D) whole cell lysates.

Anti-CD153 Antibody - Background

KLH-conjugated synthetic peptide encompassing a sequence within the center region of human CD153. The exact sequence is proprietary.