

Anti-TOPK (pT9) Antibody
Rabbit polyclonal antibody to TOPK (pT9)
Catalog # AP60497

Specification

Anti-TOPK (pT9) Antibody - Product Information

| | |
|-------------------|------------------------|
| Application | WB |
| Primary Accession | O96KB5 |
| Reactivity | Human |
| Host | Rabbit |
| Clonality | Polyclonal |
| Calculated MW | 36085 |

Anti-TOPK (pT9) Antibody - Additional Information

Gene ID 55872

Other Names

TOPK; Lymphokine-activated killer T-cell-originated protein kinase; Cancer/testis antigen 84; CT84; MAPKK-like protein kinase; Nori-3; PDZ-binding kinase; Spermatogenesis-related protein kinase; SPK; T-LAK cell-originated protein kinase

Target/Specificity

Recognizes endogenous levels of TOPK (pT9) protein.

Dilution

WB~~WB (1/500 - 1/1000), IH (1/100 - 1/200)

Format

Liquid in 0.42% Potassium phosphate, 0.87% Sodium chloride, pH 7.3, 30% glycerol, and 0.09% (W/V) sodium azide.

Storage

Store at -20 °C. Stable for 12 months from date of receipt

Anti-TOPK (pT9) Antibody - Protein Information

Name PBK

Synonyms TOPK

Function

Phosphorylates MAP kinase p38. Seems to be active only in mitosis. May also play a role in the activation of lymphoid cells. When phosphorylated, forms a complex with TP53, leading to TP53 destabilization and attenuation of G2/M checkpoint during doxorubicin- induced DNA damage.

Tissue Location

Expressed in the testis and placenta. In the testis, restrictedly expressed in outer cell layer of

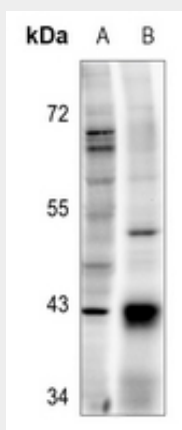
seminiferous tubules.

Anti-TOPK (pT9) Antibody - Protocols

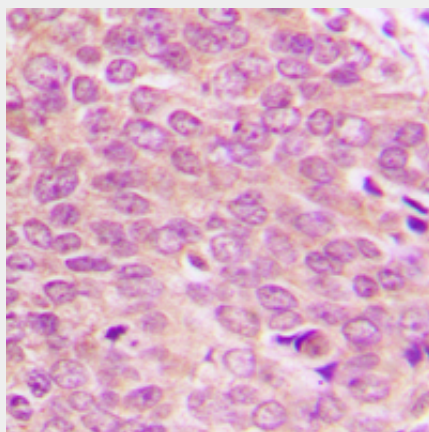
Provided below are standard protocols that you may find useful for product applications.

- [Western Blot](#)
- [Blocking Peptides](#)
- [Dot Blot](#)
- [Immunohistochemistry](#)
- [Immunofluorescence](#)
- [Immunoprecipitation](#)
- [Flow Cytometry](#)
- [Cell Culture](#)

Anti-TOPK (pT9) Antibody - Images



Western blot analysis of TOPK (pT9) expression in Myla2059 (A), SHSY5Y (B) whole cell lysates.



Immunohistochemical analysis of TOPK (pT9) staining in human breast cancer formalin fixed paraffin embedded tissue section. The section was pre-treated using heat mediated antigen retrieval with sodium citrate buffer (pH 6.0). The section was then incubated with the antibody at room temperature and detected using an HRP conjugated compact polymer system. DAB was used as the chromogen. The section was then counterstained with haematoxylin and mounted with DPX.

Anti-TOPK (pT9) Antibody - Background

KLH-conjugated synthetic peptide encompassing a sequence within the N-term region of human TOPK (pT9). The exact sequence is proprietary.