

Anti-OBCAM Antibody
Rabbit polyclonal antibody to OBCAM
Catalog # AP60494

Specification

Anti-OBCAM Antibody - Product Information

Application	WB
Primary Accession	O14982
Reactivity	Human, Mouse, Rat, Monkey, Bovine
Host	Rabbit
Clonality	Polyclonal
Calculated MW	38008

Anti-OBCAM Antibody - Additional Information

Gene ID 4978

Other Names

IGLON1; OBCAM; Opioid-binding protein/cell adhesion molecule; OBCAM; OPCML; Opioid-binding cell adhesion molecule; IgLON family member 1

Target/Specificity

Recognizes endogenous levels of OBCAM protein.

Dilution

WB~~WB (1/500 - 1/1000)

Format

Liquid in 0.42% Potassium phosphate, 0.87% Sodium chloride, pH 7.3, 30% glycerol, and 0.09% (W/V) sodium azide.

Storage

Store at -20 °C. Stable for 12 months from date of receipt

Anti-OBCAM Antibody - Protein Information

Name OPCML

Synonyms IGLON1, OBCAM

Function

Binds opioids in the presence of acidic lipids; probably involved in cell contact.

Cellular Location

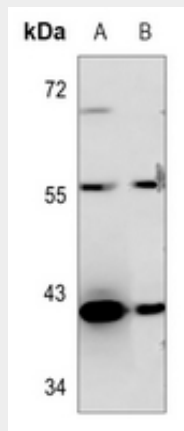
Cell membrane; Lipid-anchor, GPI- anchor

Anti-OBCAM Antibody - Protocols

Provided below are standard protocols that you may find useful for product applications.

- [Western Blot](#)
- [Blocking Peptides](#)
- [Dot Blot](#)
- [Immunohistochemistry](#)
- [Immunofluorescence](#)
- [Immunoprecipitation](#)
- [Flow Cytometry](#)
- [Cell Culture](#)

Anti-OBCAM Antibody - Images



Western blot analysis of OBCAM expression in mouse testis (A), rat testis (B) whole cell lysates.

Anti-OBCAM Antibody - Background

KLH-conjugated synthetic peptide encompassing a sequence within the center region of human OBCAM. The exact sequence is proprietary.