

Anti-IKB epsilon Antibody
Rabbit polyclonal antibody to IKB epsilon
Catalog # AP60492

Specification

Anti-IKB epsilon Antibody - Product Information

Application	WB, IF
Primary Accession	O00221
Other Accession	O54910
Reactivity	Human, Mouse, Rat, Bovine
Host	Rabbit
Clonality	Polyclonal
Calculated MW	52864

Anti-IKB epsilon Antibody - Additional Information

Gene ID 4794

Other Names

IKBE; NF-kappa-B inhibitor epsilon; NF-kappa-BIE; I-kappa-B-epsilon; IKB-E; Ikb-epsilon; IkappaBepsilon

Target/Specificity

Recognizes endogenous levels of IKB epsilon protein.

Dilution

WB~~WB (1/500 - 1/1000), IH (1/100 - 1/200), IF/IC (1/100 - 1/500)
IF~~WB (1/500 - 1/1000), IH (1/100 - 1/200), IF/IC (1/100 - 1/500)

Format

Liquid in 0.42% Potassium phosphate, 0.87% Sodium chloride, pH 7.3, 30% glycerol, and 0.09% (W/V) sodium azide.

Storage

Store at -20 °C. Stable for 12 months from date of receipt

Anti-IKB epsilon Antibody - Protein Information

Name NFKBIE

Synonyms IKBE

Function

Inhibits NF-kappa-B by complexing with and trapping it in the cytoplasm. Inhibits DNA-binding of NF-kappa-B p50-p65 and p50-c-Rel complexes.

Cellular Location

Cytoplasm.

Tissue Location

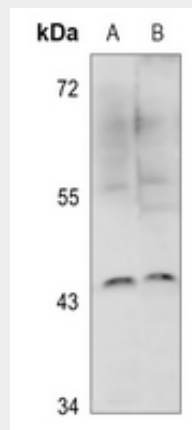
Highly expressed in spleen, testis and lung, followed by kidney, pancreas, heart, placenta and brain. Also expressed in granulocytes and macrophages

Anti-IKB epsilon Antibody - Protocols

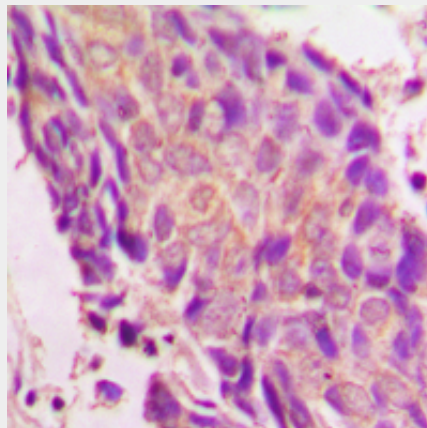
Provided below are standard protocols that you may find useful for product applications.

- [Western Blot](#)
- [Blocking Peptides](#)
- [Dot Blot](#)
- [Immunohistochemistry](#)
- [Immunofluorescence](#)
- [Immunoprecipitation](#)
- [Flow Cytometry](#)
- [Cell Culture](#)

Anti-IKB epsilon Antibody - Images

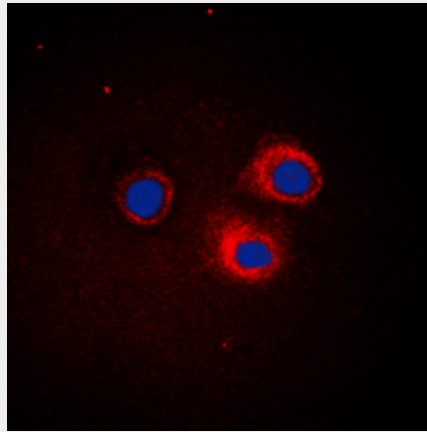


Western blot analysis of IKB epsilon expression in A549 (A), H1792 (B) whole cell lysates.



Immunohistochemical analysis of IKB epsilon staining in human prostate cancer formalin fixed paraffin embedded tissue section. The section was pre-treated using heat mediated antigen retrieval with sodium citrate buffer (pH 6.0). The section was then incubated with the antibody at room temperature and detected using an HRP conjugated compact polymer system. DAB was used as the chromogen. The section was then counterstained with haematoxylin and mounted

with DPX.



Immunofluorescent analysis of IKB epsilon staining in HepG2 cells. Formalin-fixed cells were permeabilized with 0.1% Triton X-100 in TBS for 5-10 minutes and blocked with 3% BSA-PBS for 30 minutes at room temperature. Cells were probed with the primary antibody in 3% BSA-PBS and incubated overnight at 4 °C in a humidified chamber. Cells were washed with PBST and incubated with a DyLight 594-conjugated secondary antibody (red) in PBS at room temperature in the dark. DAPI was used to stain the cell nuclei (blue).

Anti-IKB epsilon Antibody - Background

KLH-conjugated synthetic peptide encompassing a sequence within the center region of human IKB epsilon. The exact sequence is proprietary.