

Anti-MNK1 Antibody
Rabbit polyclonal antibody to MNK1
Catalog # AP60484

Specification

Anti-MNK1 Antibody - Product Information

Application	WB
Primary Accession	O9BUB5
Other Accession	O08605
Reactivity	Human, Mouse, Bovine
Host	Rabbit
Clonality	Polyclonal
Calculated MW	51342

Anti-MNK1 Antibody - Additional Information

Gene ID 8569

Other Names

MNK1; MAP kinase-interacting serine/threonine-protein kinase 1; MAP kinase signal-integrating kinase 1; MAPK signal-integrating kinase 1; Mnk1

Target/Specificity

Recognizes endogenous levels of MNK1 protein.

Dilution

WB~~WB (1/500 - 1/1000), IH (1/100 - 1/200)

Format

Liquid in 0.42% Potassium phosphate, 0.87% Sodium chloride, pH 7.3, 30% glycerol, and 0.09% (W/V) sodium azide.

Storage

Store at -20 °C. Stable for 12 months from date of receipt

Anti-MNK1 Antibody - Protein Information

Name MKNK1

Synonyms MNK1

Function

May play a role in the response to environmental stress and cytokines. Appears to regulate translation by phosphorylating EIF4E, thus increasing the affinity of this protein for the 7-methylguanosine- containing mRNA cap.

Cellular Location

[Isoform 2]: Cytoplasm.

Tissue Location

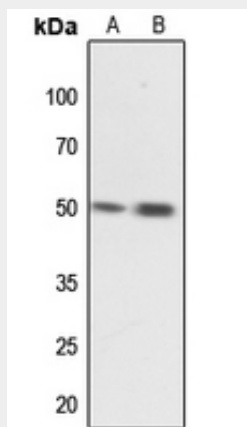
Ubiquitous..

Anti-MNK1 Antibody - Protocols

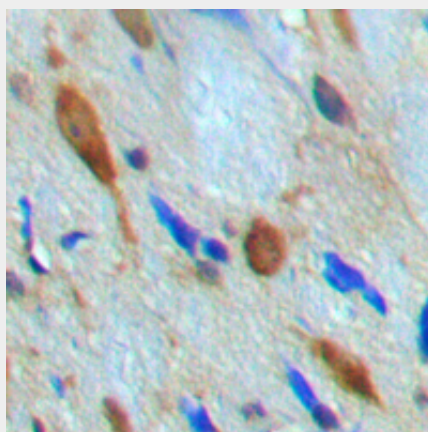
Provided below are standard protocols that you may find useful for product applications.

- [Western Blot](#)
- [Blocking Peptides](#)
- [Dot Blot](#)
- [Immunohistochemistry](#)
- [Immunofluorescence](#)
- [Immunoprecipitation](#)
- [Flow Cytometry](#)
- [Cell Culture](#)

Anti-MNK1 Antibody - Images



Western blot analysis of MNK1 expression in HeLa (A), H446 (B) whole cell lysates.



Immunohistochemical analysis of MNK1 staining in human brain formalin fixed paraffin embedded tissue section. The section was pre-treated using heat mediated antigen retrieval with sodium citrate buffer (pH 6.0). The section was then incubated with the antibody at room temperature and detected using an HRP conjugated compact polymer system. DAB was used as the chromogen. The section was then counterstained with haematoxylin and mounted with DPX.

Anti-MNK1 Antibody - Background

KLH-conjugated synthetic peptide encompassing a sequence within the center region of human MNK1. The exact sequence is proprietary.