

Anti-Laminin gamma 3 Antibody
Rabbit polyclonal antibody to Laminin gamma 3
Catalog # AP60478

Specification

Anti-Laminin gamma 3 Antibody - Product Information

Application	WB
Primary Accession	O9Y6N6
Reactivity	Human
Host	Rabbit
Clonality	Polyclonal
Calculated MW	171227

Anti-Laminin gamma 3 Antibody - Additional Information

Gene ID 10319

Other Names

Laminin subunit gamma-3; Laminin-12 subunit gamma; Laminin-14 subunit gamma; Laminin-15 subunit gamma

Target/Specificity

Recognizes endogenous levels of Laminin gamma 3 protein.

Dilution

WB~~WB (1/500 - 1/1000)

Format

Liquid in 0.42% Potassium phosphate, 0.87% Sodium chloride, pH 7.3, 30% glycerol, and 0.09% (W/V) sodium azide.

Storage

Store at -20 °C. Stable for 12 months from date of receipt

Anti-Laminin gamma 3 Antibody - Protein Information

Name LAMC3

Function

Binding to cells via a high affinity receptor, laminin is thought to mediate the attachment, migration and organization of cells into tissues during embryonic development by interacting with other extracellular matrix components.

Cellular Location

Secreted, extracellular space, extracellular matrix, basement membrane

Tissue Location

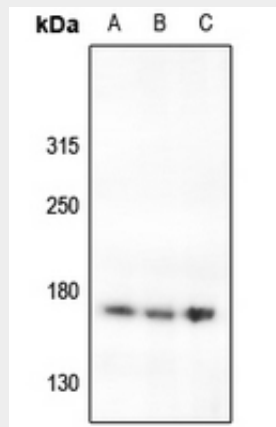
Broadly expressed in: skin, heart, lung, and the reproductive tracts

Anti-Laminin gamma 3 Antibody - Protocols

Provided below are standard protocols that you may find useful for product applications.

- [Western Blot](#)
- [Blocking Peptides](#)
- [Dot Blot](#)
- [Immunohistochemistry](#)
- [Immunofluorescence](#)
- [Immunoprecipitation](#)
- [Flow Cytometry](#)
- [Cell Culture](#)

Anti-Laminin gamma 3 Antibody - Images



Western blot analysis of Laminin gamma 3 expression in A549 (A), PC3 (B), A2780 (C) whole cell lysates.

Anti-Laminin gamma 3 Antibody - Background

KLH-conjugated synthetic peptide encompassing a sequence within the C-term region of human Laminin gamma 3. The exact sequence is proprietary.