

**Anti-PRKD1/2/3 (pS738/S742) Antibody**  
Rabbit polyclonal antibody to PRKD1/2/3 (pS738/S742)  
Catalog # AP60476

## Specification

---

### Anti-PRKD1/2/3 (pS738/S742) Antibody - Product Information

Application	WB
Primary Accession	<a href="#">Q15139</a> , <a href="#">Q9BZL6</a> , <a href="#">Q94806</a>
Other Accession	<a href="#">Q62101</a> , <a href="#">Q8BZ03</a> , <a href="#">Q8K1Y2</a>
Reactivity	Human, Mouse, Rat, Monkey, Pig, Bovine, SARS
Host	Rabbit
Clonality	Polyclonal

### Anti-PRKD1/2/3 (pS738/S742) Antibody - Additional Information

#### Other Names

PRKD1; PKD; PKD1; PRKCM; Serine/threonine-protein kinase D1; Protein kinase C mu type; Protein kinase D; nPKC-D1; nPKC-mu; PRKD2; PKD2; HSPC187; Serine/threonine-protein kinase D2; nPKC-D2; PRKD3; EPK2; PRKCN; Serine/threonine-protein kinase D3; Protein kinase C nu type; Protein kinase EPK2; nPKC-nu

#### Target/Specificity

Recognizes endogenous levels of PRKD1/2/3 (pS738/S742) protein.

#### Dilution

WB~~WB (1/500 - 1/1000), IH (1/100 - 1/200)

#### Format

Liquid in 0.42% Potassium phosphate, 0.87% Sodium chloride, pH 7.3, 30% glycerol, and 0.09% (W/V) sodium azide.

#### Storage

Store at -20 °C. Stable for 12 months from date of receipt

### Anti-PRKD1/2/3 (pS738/S742) Antibody - Protein Information

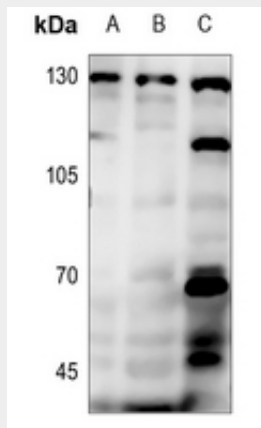
### Anti-PRKD1/2/3 (pS738/S742) Antibody - Protocols

Provided below are standard protocols that you may find useful for product applications.

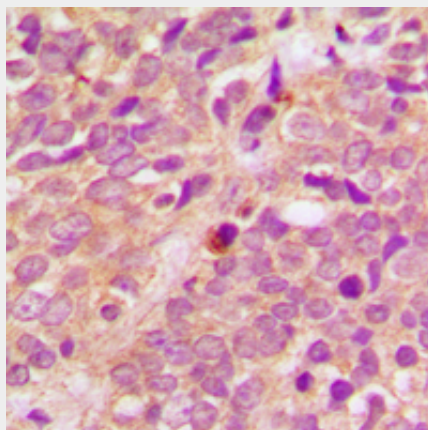
- [Western Blot](#)
- [Blocking Peptides](#)
- [Dot Blot](#)
- [Immunohistochemistry](#)
- [Immunofluorescence](#)

- [Immunoprecipitation](#)
- [Flow Cytometry](#)
- [Cell Culture](#)

### Anti-PRKD1/2/3 (pS738/S742) Antibody - Images



Western blot analysis of PRKD1/2/3 (pS738/S742) expression in HEK293T (A), H446 (B), H1792 (C) whole cell lysates.



Immunohistochemical analysis of PRKD1/2/3 (pS738/S742) staining in human breast cancer formalin fixed paraffin embedded tissue section. The section was pre-treated using heat mediated antigen retrieval with sodium citrate buffer (pH 6.0). The section was then incubated with the antibody at room temperature and detected using an HRP conjugated compact polymer system. DAB was used as the chromogen. The section was then counterstained with haematoxylin and mounted with DPX.

### Anti-PRKD1/2/3 (pS738/S742) Antibody - Background

KLH-conjugated synthetic peptide encompassing a sequence within the C-term region of human PRKD1/2/3 (pS738/S742). The exact sequence is proprietary.