

**Anti-Islet-2 Antibody**  
Rabbit polyclonal antibody to Islet-2  
Catalog # AP60472

**Specification**

---

**Anti-Islet-2 Antibody - Product Information**

Application	WB, IF
Primary Accession	<a href="#">O96A47</a>
Other Accession	<a href="#">O9CXV0</a>
Reactivity	Human, Mouse, Rat, Monkey
Host	Rabbit
Clonality	Polyclonal
Calculated MW	39768

**Anti-Islet-2 Antibody - Additional Information**

**Gene ID** 64843

**Other Names**

Insulin gene enhancer protein ISL-2; Islet-2

**Target/Specificity**

Recognizes endogenous levels of Islet-2 protein.

**Dilution**

WB~~WB (1/500 - 1/1000), IF/IC (1/100 - 1/500)

IF~~WB (1/500 - 1/1000), IF/IC (1/100 - 1/500)

**Format**

Liquid in 0.42% Potassium phosphate, 0.87% Sodium chloride, pH 7.3, 30% glycerol, and 0.09% (W/V) sodium azide.

**Storage**

Store at -20 °C. Stable for 12 months from date of receipt

**Anti-Islet-2 Antibody - Protein Information**

**Name** ISL2

**Function**

Transcriptional factor that defines subclasses of motoneurons that segregate into columns in the spinal cord and select distinct axon pathways.

**Cellular Location**

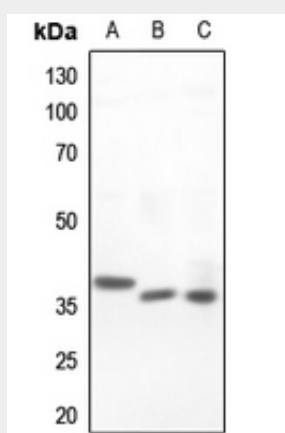
Nucleus {ECO:0000255|PROSITE-ProRule:PRU00108}.

## Anti-Islet-2 Antibody - Protocols

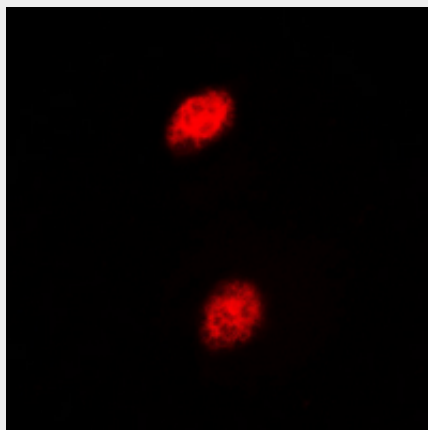
Provided below are standard protocols that you may find useful for product applications.

- [Western Blot](#)
- [Blocking Peptides](#)
- [Dot Blot](#)
- [Immunohistochemistry](#)
- [Immunofluorescence](#)
- [Immunoprecipitation](#)
- [Flow Cytometry](#)
- [Cell Culture](#)

## Anti-Islet-2 Antibody - Images



Western blot analysis of Islet-2 expression in HeLa (A), mouse liver (B), rat liver (C) whole cell lysates.



Immunofluorescent analysis of Islet-2 staining in HEK293T cells. Formalin-fixed cells were permeabilized with 0.1% Triton X-100 in TBS for 5-10 minutes and blocked with 3% BSA-PBS for 30 minutes at room temperature. Cells were probed with the primary antibody in 3% BSA-PBS and incubated overnight at 4 °C in a humidified chamber. Cells were washed with PBST and incubated with a DyLight 594-conjugated secondary antibody (red) in PBS at room temperature in the dark. DAPI was used to stain the cell nuclei (blue).

## Anti-Islet-2 Antibody - Background

KLH-conjugated synthetic peptide encompassing a sequence within the center region of human

Islet-2. The exact sequence is proprietary.