

Anti-IRS1 (pS307) Antibody
Rabbit polyclonal antibody to IRS1 (pS307)
Catalog # AP60471**Specification**

Anti-IRS1 (pS307) Antibody - Product Information

Application	WB, IF
Primary Accession	P35568
Other Accession	P35569
Reactivity	Human, Mouse, Rat, Monkey
Host	Rabbit
Clonality	Polyclonal
Calculated MW	131591

Anti-IRS1 (pS307) Antibody - Additional Information**Gene ID** 3667**Other Names**

Insulin receptor substrate 1; IRS-1

Target/Specificity

Recognizes endogenous levels of IRS1 (pS307) protein.

Dilution

WB~~WB (1/500 - 1/1000), IH (1/100 - 1/200), IF/IC (1/100 - 1/500)

IF~~WB (1/500 - 1/1000), IH (1/100 - 1/200), IF/IC (1/100 - 1/500)

Format

Liquid in 0.42% Potassium phosphate, 0.87% Sodium chloride, pH 7.3, 30% glycerol, and 0.09% (W/V) sodium azide.

Storage

Store at -20 °C. Stable for 12 months from date of receipt

Anti-IRS1 (pS307) Antibody - Protein Information**Name** IRS1**Function**

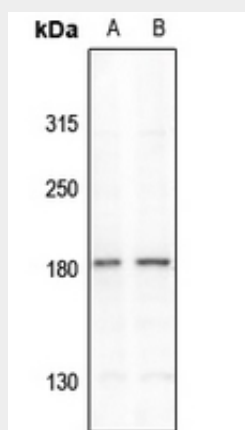
May mediate the control of various cellular processes by insulin. When phosphorylated by the insulin receptor binds specifically to various cellular proteins containing SH2 domains such as phosphatidylinositol 3-kinase p85 subunit or GRB2. Activates phosphatidylinositol 3-kinase when bound to the regulatory p85 subunit (By similarity).

Anti-IRS1 (pS307) Antibody - Protocols

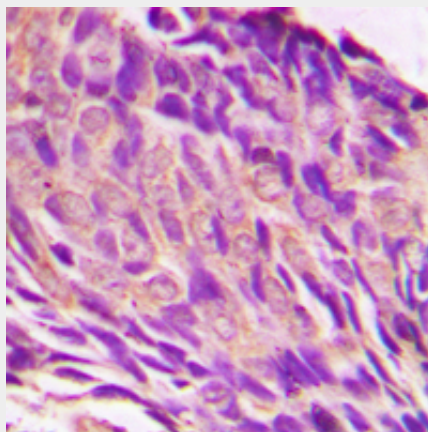
Provided below are standard protocols that you may find useful for product applications.

- [Western Blot](#)
- [Blocking Peptides](#)
- [Dot Blot](#)
- [Immunohistochemistry](#)
- [Immunofluorescence](#)
- [Immunoprecipitation](#)
- [Flow Cytometry](#)
- [Cell Culture](#)

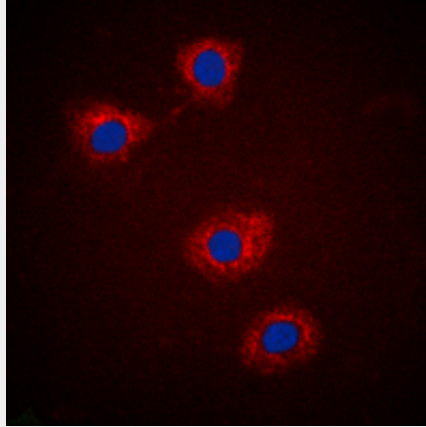
Anti-IRS1 (pS307) Antibody - Images



Western blot analysis of IRS1 (pS307) expression in HEK293T (A), A375 (B) whole cell lysates.



Immunohistochemical analysis of IRS1 (pS307) staining in human prostate cancer formalin fixed paraffin embedded tissue section. The section was pre-treated using heat mediated antigen retrieval with sodium citrate buffer (pH 6.0). The section was then incubated with the antibody at room temperature and detected using an HRP conjugated compact polymer system. DAB was used as the chromogen. The section was then counterstained with haematoxylin and mounted with DPX.



Immunofluorescent analysis of IRS1 (pS307) staining in HEK293T cells. Formalin-fixed cells were permeabilized with 0.1% Triton X-100 in TBS for 5-10 minutes and blocked with 3% BSA-PBS for 30 minutes at room temperature. Cells were probed with the primary antibody in 3% BSA-PBS and incubated overnight at 4 °C in a humidified chamber. Cells were washed with PBST and incubated with a DyLight 594-conjugated secondary antibody (red) in PBS at room temperature in the dark. DAPI was used to stain the cell nuclei (blue).

Anti-IRS1 (pS307) Antibody - Background

KLH-conjugated synthetic peptide encompassing a sequence within the center region of human IRS1 (pS307). The exact sequence is proprietary.