

Anti-CD213a2 Antibody
Rabbit polyclonal antibody to CD213a2
Catalog # AP60468

Specification

Anti-CD213a2 Antibody - Product Information

Application	WB
Primary Accession	Q14627
Other Accession	O88786
Reactivity	Human, Mouse, Rat
Host	Rabbit
Clonality	Polyclonal
Calculated MW	44176

Anti-CD213a2 Antibody - Additional Information

Gene ID 3598

Other Names

IL13R; Interleukin-13 receptor subunit alpha-2; IL-13 receptor subunit alpha-2; IL-13R subunit alpha-2; IL-13R-alpha-2; IL-13RA2; Interleukin-13-binding protein; CD213a2

Target/Specificity

Recognizes endogenous levels of CD213a2 protein.

Dilution

WB~~WB (1/500 - 1/1000)

Format

Liquid in 0.42% Potassium phosphate, 0.87% Sodium chloride, pH 7.3, 30% glycerol, and 0.09% (W/V) sodium azide.

Storage

Store at -20 °C. Stable for 12 months from date of receipt

Anti-CD213a2 Antibody - Protein Information

Name IL13RA2

Synonyms IL13R

Function

Binds as a monomer with high affinity to interleukin-13 (IL13), but not to interleukin-4 (IL4).

Cellular Location

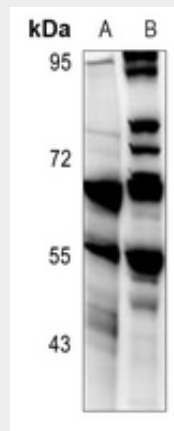
Membrane; Single-pass type I membrane protein.

Anti-CD213a2 Antibody - Protocols

Provided below are standard protocols that you may find useful for product applications.

- [Western Blot](#)
- [Blocking Peptides](#)
- [Dot Blot](#)
- [Immunohistochemistry](#)
- [Immunofluorescence](#)
- [Immunoprecipitation](#)
- [Flow Cytometry](#)
- [Cell Culture](#)

Anti-CD213a2 Antibody - Images



Western blot analysis of CD213a2 expression in mouse testis (A), rat brain (B) whole cell lysates.

Anti-CD213a2 Antibody - Background

KLH-conjugated synthetic peptide encompassing a sequence within the center region of human CD213a2. The exact sequence is proprietary.