

Anti-GPR56 Antibody
Rabbit polyclonal antibody to GPR56
Catalog # AP60464

Specification

Anti-GPR56 Antibody - Product Information

Application	WB
Primary Accession	O9Y653
Reactivity	Human, Rat
Host	Rabbit
Clonality	Polyclonal
Calculated MW	77738

Anti-GPR56 Antibody - Additional Information

Gene ID 9289

Other Names

TM7LN4; TM7XN1; G-protein coupled receptor 56; Protein TM7XN1

Target/Specificity

Recognizes endogenous levels of GPR56 protein.

Dilution

WB~~WB (1/500 - 1/1000)

Format

Liquid in 0.42% Potassium phosphate, 0.87% Sodium chloride, pH 7.3, 30% glycerol, and 0.09% (W/V) sodium azide.

Storage

Store at -20 °C. Stable for 12 months from date of receipt

Anti-GPR56 Antibody - Protein Information

Name ADGRG1 ([HGNC:4512](#))

Synonyms GPR56, TM7LN4, TM7XN1

Function

Receptor involved in cell adhesion and probably in cell-cell interactions. Mediates cell matrix adhesion in developing neurons and hematopoietic stem cells. Receptor for collagen III/COL3A1 in the developing brain and involved in regulation of cortical development, specifically in maintenance of the pial basement membrane integrity and in cortical lamination (By similarity). Binding to the COL3A1 ligand inhibits neuronal migration and activates the RhoA pathway by coupling to GNA13 and possibly GNA12 (PubMed:22238662). Plays a role in the maintenance of hematopoietic stem cells and/or leukemia stem cells in bone marrow niche

(By similarity). Plays a critical role in cancer progression by inhibiting VEGFA production thereby inhibiting angiogenesis through a signaling pathway mediated by PRKCA (PubMed:16757564, PubMed:21724588). Plays an essential role in testis development (By similarity).

Cellular Location

Cell membrane; Multi-pass membrane protein [ADGRG1 C-terminal fragment]: Membrane raft. Note=Interaction with its ligand COL3A1 leads to the release of ADGRG1 NT from the membrane and triggers the association of ADGRG1 CT with lipid rafts

Tissue Location

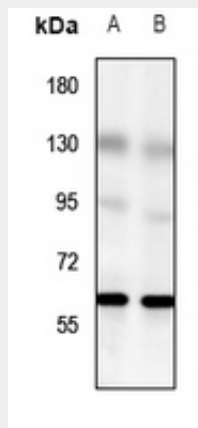
Widely distributed with highest levels found in thyroid gland, brain and heart. Expressed in a great number of tumor cells. Expression is down-regulated in different tumors from highly metastatic cells.

Anti-GPR56 Antibody - Protocols

Provided below are standard protocols that you may find useful for product applications.

- [Western Blot](#)
- [Blocking Peptides](#)
- [Dot Blot](#)
- [Immunohistochemistry](#)
- [Immunofluorescence](#)
- [Immunoprecipitation](#)
- [Flow Cytometry](#)
- [Cell Culture](#)

Anti-GPR56 Antibody - Images



Western blot analysis of GPR56 expression in C6 (A), HeLa (B) whole cell lysates.

Anti-GPR56 Antibody - Background

KLH-conjugated synthetic peptide encompassing a sequence within the center region of human GPR56. The exact sequence is proprietary.