

Anti-EEF2K Antibody
Rabbit polyclonal antibody to EEF2K
Catalog # AP60452

Specification

Anti-EEF2K Antibody - Product Information

Application	WB
Primary Accession	O00418
Other Accession	O08796
Reactivity	Human, Rat, Monkey
Host	Rabbit
Clonality	Polyclonal
Calculated MW	82144

Anti-EEF2K Antibody - Additional Information

Gene ID 29904

Other Names

Eukaryotic elongation factor 2 kinase; eEF-2 kinase; eEF-2K; Calcium/calmodulin-dependent eukaryotic elongation factor 2 kinase

Target/Specificity

Recognizes endogenous levels of EEF2K protein.

Dilution

WB~~WB (1/500 - 1/1000), IH (1/100 - 1/200)

Format

Liquid in 0.42% Potassium phosphate, 0.87% Sodium chloride, pH 7.3, 30% glycerol, and 0.09% (W/V) sodium azide.

Storage

Store at -20 °C. Stable for 12 months from date of receipt

Anti-EEF2K Antibody - Protein Information

Name EEF2K

Function

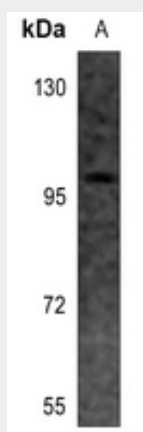
Threonine kinase that regulates protein synthesis by controlling the rate of peptide chain elongation. Upon activation by a variety of upstream kinases including AMPK or TRPM7, phosphorylates the elongation factor EEF2 at a single site, renders it unable to bind ribosomes and thus inactive. In turn, the rate of protein synthesis is reduced.

Anti-EEF2K Antibody - Protocols

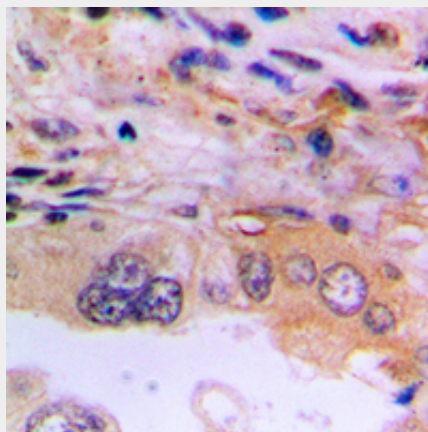
Provided below are standard protocols that you may find useful for product applications.

- [Western Blot](#)
- [Blocking Peptides](#)
- [Dot Blot](#)
- [Immunohistochemistry](#)
- [Immunofluorescence](#)
- [Immunoprecipitation](#)
- [Flow Cytometry](#)
- [Cell Culture](#)

Anti-EEF2K Antibody - Images



Western blot analysis of EEF2K expression in MCF7 (A) whole cell lysates.



Immunohistochemical analysis of EEF2K staining in human lung cancer formalin fixed paraffin embedded tissue section. The section was pre-treated using heat mediated antigen retrieval with sodium citrate buffer (pH 6.0). The section was then incubated with the antibody at room temperature and detected using an HRP conjugated compact polymer system. DAB was used as the chromogen. The section was then counterstained with haematoxylin and mounted with DPX.

Anti-EEF2K Antibody - Background

KLH-conjugated synthetic peptide encompassing a sequence within the center region of human EEF2K. The exact sequence is proprietary.