

Anti-CLN5 Antibody
Rabbit polyclonal antibody to CLN5
Catalog # AP60443

Specification

Anti-CLN5 Antibody - Product Information

Application	WB
Primary Accession	O75503
Other Accession	Q3UMW8
Reactivity	Human, Mouse, Rat, Bovine, SARS
Host	Rabbit
Clonality	Polyclonal
Calculated MW	41497

Anti-CLN5 Antibody - Additional Information

Gene ID 1203

Other Names

Ceroid-lipofuscinosis neuronal protein 5; Protein CLN5

Target/Specificity

Recognizes endogenous levels of CLN5 protein.

Dilution

WB~~WB (1/500 - 1/1000)

Format

Liquid in 0.42% Potassium phosphate, 0.87% Sodium chloride, pH 7.3, 30% glycerol, and 0.09% (W/V) sodium azide.

Storage

Store at -20 °C. Stable for 12 months from date of receipt

Anti-CLN5 Antibody - Protein Information

Name CLN5

Synonyms BMPS {ECO:0000303|PubMed:37708259}

Function

[Bis(monoacylglycero)phosphate synthase CLN5, secreted form]: Catalyzes the synthesis of bis(monoacylglycero)phosphate (BMP) via transacylation of 2 molecules of lysophosphatidylglycerol (LPG) (PubMed:37708259). BMP also known as lysobisphosphatidic acid plays a key role in the formation of intraluminal vesicles and in maintaining intracellular cholesterol homeostasis (PubMed:37708259). Can use only LPG as the exclusive lysophospholipid acyl donor for base exchange and displays

BMP synthase activity towards various LPGs (LPG 14:0, LPG 16:0, LPG 18:0, LPG 18:1) with a higher preference for longer chain lengths (PubMed:37708259). Plays a role in influencing the retrograde trafficking of lysosomal sorting receptors SORT1 and IGF2R from the endosomes to the trans-Golgi network by controlling the recruitment of retromer complex to the endosomal membrane (PubMed:22431521). Regulates the localization and activation of RAB7A which is required to recruit the retromer complex to the endosomal membrane (PubMed:22431521).

Cellular Location

[Bis(monoacylglycero)phosphate synthase CLN5, secreted form]: Lysosome

Tissue Location

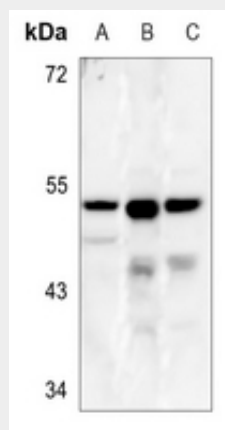
Ubiquitous..

Anti-CLN5 Antibody - Protocols

Provided below are standard protocols that you may find useful for product applications.

- [Western Blot](#)
- [Blocking Peptides](#)
- [Dot Blot](#)
- [Immunohistochemistry](#)
- [Immunofluorescence](#)
- [Immunoprecipitation](#)
- [Flow Cytometry](#)
- [Cell Culture](#)

Anti-CLN5 Antibody - Images



Western blot analysis of CLN5 expression in A375 (A), mouse brain (B), rat brain (C) whole cell lysates.

Anti-CLN5 Antibody - Background

KLH-conjugated synthetic peptide encompassing a sequence within the center region of human CLN5. The exact sequence is proprietary.