

Anti-CDC25C (pS216) Antibody
Rabbit polyclonal antibody to CDC25C (pS216)
Catalog # AP60438

Specification

Anti-CDC25C (pS216) Antibody - Product Information

Application	WB, IF
Primary Accession	P30307
Other Accession	P48967
Reactivity	Human, Mouse, Rat
Host	Rabbit
Clonality	Polyclonal
Calculated MW	53365

Anti-CDC25C (pS216) Antibody - Additional Information

Gene ID 995

Other Names

M-phase inducer phosphatase 3; Dual specificity phosphatase Cdc25C

Target/Specificity

Recognizes endogenous levels of CDC25C (pS216) protein.

Dilution

WB~~WB (1/500 - 1/1000), IH (1/100 - 1/200), IF/IC (1/100 - 1/500)

IF~~WB (1/500 - 1/1000), IH (1/100 - 1/200), IF/IC (1/100 - 1/500)

Format

Liquid in 0.42% Potassium phosphate, 0.87% Sodium chloride, pH 7.3, 30% glycerol, and 0.09% (W/V) sodium azide.

Storage

Store at -20 °C. Stable for 12 months from date of receipt

Anti-CDC25C (pS216) Antibody - Protein Information

Name CDC25C

Function

Functions as a dosage-dependent inducer in mitotic control. Tyrosine protein phosphatase required for progression of the cell cycle (PubMed:8119945). When phosphorylated, highly effective in activating G2 cells into prophase (PubMed:8119945). Directly dephosphorylates CDK1 and activates its kinase activity (PubMed:8119945).

Cellular Location

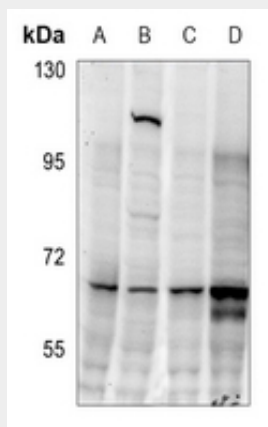
Nucleus

Anti-CDC25C (pS216) Antibody - Protocols

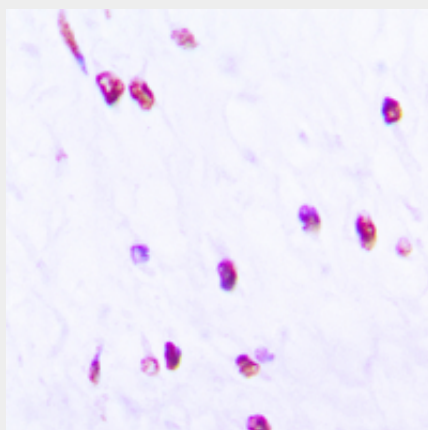
Provided below are standard protocols that you may find useful for product applications.

- [Western Blot](#)
- [Blocking Peptides](#)
- [Dot Blot](#)
- [Immunohistochemistry](#)
- [Immunofluorescence](#)
- [Immunoprecipitation](#)
- [Flow Cytometry](#)
- [Cell Culture](#)

Anti-CDC25C (pS216) Antibody - Images

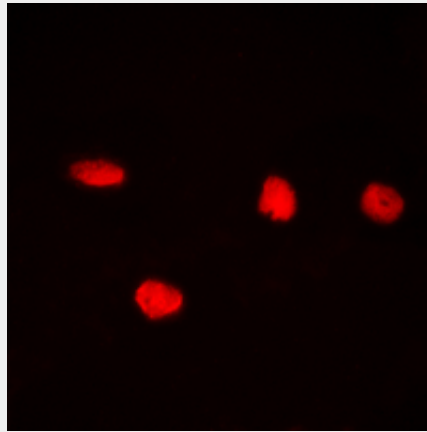


Western blot analysis of CDC25C (pS216) expression in PC12 (A), CT26 (B), HeLa (C), HEK293T (D) whole cell lysates.



Immunohistochemical analysis of CDC25C (pS216) staining in human lung cancer formalin fixed paraffin embedded tissue section. The section was pre-treated using heat mediated antigen retrieval with sodium citrate buffer (pH 6.0). The section was then incubated with the antibody at room temperature and detected using an HRP conjugated compact polymer system. DAB was used as the chromogen. The section was then counterstained with haematoxylin and mounted

with DPX.



Immunofluorescent analysis of CDC25C (pS216) staining in HeLa cells. Formalin-fixed cells were permeabilized with 0.1% Triton X-100 in TBS for 5-10 minutes and blocked with 3% BSA-PBS for 30 minutes at room temperature. Cells were probed with the primary antibody in 3% BSA-PBS and incubated overnight at 4 °C in a humidified chamber. Cells were washed with PBST and incubated with a DyLight 594-conjugated secondary antibody (red) in PBS at room temperature in the dark.

Anti-CDC25C (pS216) Antibody - Background

KLH-conjugated synthetic peptide encompassing a sequence within the center region of human CDC25C (pS216). The exact sequence is proprietary.