

Anti-ATG16L2 Antibody
Rabbit polyclonal antibody to ATG16L2
Catalog # AP60428

Specification

Anti-ATG16L2 Antibody - Product Information

Application	WB
Primary Accession	Q8NAA4
Other Accession	Q6KAU8
Reactivity	Human, Mouse, Rat
Host	Rabbit
Clonality	Polyclonal
Calculated MW	68998

Anti-ATG16L2 Antibody - Additional Information

Gene ID 89849

Other Names

WDR80; Autophagy-related protein 16-2; APG16-like 2; WD repeat-containing protein 80

Target/Specificity

Recognizes endogenous levels of ATG16L2 protein.

Dilution

WB~~WB (1/500 - 1/1000)

Format

Liquid in 0.42% Potassium phosphate, 0.87% Sodium chloride, pH 7.3, 30% glycerol, and 0.09% (W/V) sodium azide.

Storage

Store at -20 °C. Stable for 12 months from date of receipt

Anti-ATG16L2 Antibody - Protein Information

Name ATG16L2

Synonyms WDR80

Function

May play a role in regulating epithelial homeostasis in an ATG16L1-dependent manner.

Cellular Location

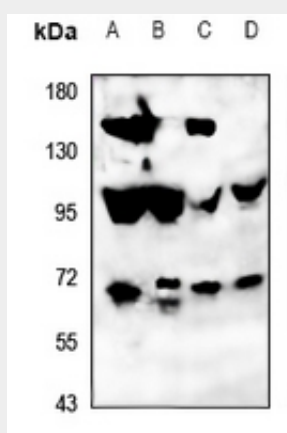
Cytoplasm, cytosol {ECO:0000250|UniProtKB:Q6KAU8}. Note=Localizes also to discrete punctae along the ciliary axoneme. {ECO:0000250|UniProtKB:Q6KAU8}

Anti-ATG16L2 Antibody - Protocols

Provided below are standard protocols that you may find useful for product applications.

- [Western Blot](#)
- [Blocking Peptides](#)
- [Dot Blot](#)
- [Immunohistochemistry](#)
- [Immunofluorescence](#)
- [Immunoprecipitation](#)
- [Flow Cytometry](#)
- [Cell Culture](#)

Anti-ATG16L2 Antibody - Images



Western blot analysis of ATG16L2 expression in HeLa (A), MCF7 (B), C6 (C), MEF (D) whole cell lysates.

Anti-ATG16L2 Antibody - Background

KLH-conjugated synthetic peptide encompassing a sequence within the center region of human ATG16L2. The exact sequence is proprietary.