

Anti-MARCH1 Antibody
Rabbit polyclonal antibody to MARCH1
Catalog # AP60421

Specification

Anti-MARCH1 Antibody - Product Information

Application	WB
Primary Accession	O8TCQ1
Other Accession	O6NZQ8
Reactivity	Human, Mouse
Host	Rabbit
Clonality	Polyclonal
Calculated MW	32308

Anti-MARCH1 Antibody - Additional Information

Gene ID 55016

Other Names

RNF171; E3 ubiquitin-protein ligase MARCH1; Membrane-associated RING finger protein 1; Membrane-associated RING-CH protein I; MARCH-I; RING finger protein 171

Target/Specificity

Recognizes endogenous levels of MARCH1 protein.

Dilution

WB~~WB (1/500 - 1/1000), IH (1/100 - 1/200)

Format

Liquid in 0.42% Potassium phosphate, 0.87% Sodium chloride, pH 7.3, 30% glycerol, and 0.09% (W/V) sodium azide.

Storage

Store at -20 °C. Stable for 12 months from date of receipt

Anti-MARCH1 Antibody - Protein Information

Name MARCHF1 ([HGNC:26077](#))

Synonyms MARCH1, RNF171

Function

E3 ubiquitin-protein ligase that mediates ubiquitination of TFRC, CD86, FAS and MHC class II proteins, such as HLA-DR alpha and beta, and promotes their subsequent endocytosis and sorting to lysosomes via multivesicular bodies. By constitutively ubiquitinating MHC class II proteins in immature dendritic cells, down-regulates their cell surface localization thus sequestering them in the intracellular endosomal system.

Cellular Location

Golgi apparatus, trans-Golgi network membrane {ECO:0000250|UniProtKB:Q6NZQ8}; Multi-pass membrane protein. Lysosome membrane; Multi-pass membrane protein. Cytoplasmic vesicle membrane; Multi-pass membrane protein. Late endosome membrane; Multi-pass membrane protein. Early endosome membrane; Multi-pass membrane protein. Cell membrane; Multi-pass membrane protein

Tissue Location

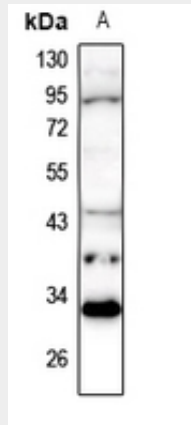
Expressed in antigen presenting cells, APCs, located in lymph nodes and spleen. Also expressed in lung. Expression is high in follicular B-cells, moderate in dendritic cells and low in splenic T-cells.

Anti-MARCH1 Antibody - Protocols

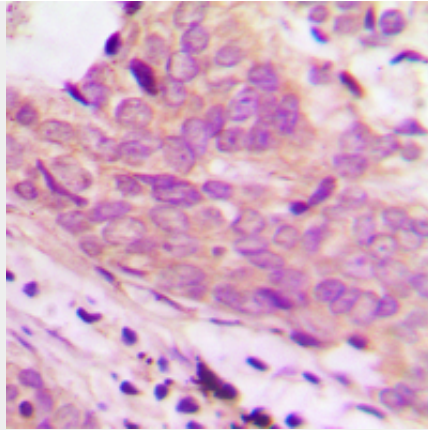
Provided below are standard protocols that you may find useful for product applications.

- [Western Blot](#)
- [Blocking Peptides](#)
- [Dot Blot](#)
- [Immunohistochemistry](#)
- [Immunofluorescence](#)
- [Immunoprecipitation](#)
- [Flow Cytometry](#)
- [Cell Culture](#)

Anti-MARCH1 Antibody - Images



Western blot analysis of MARCH1 expression in Raw264.7 (A) whole cell lysates.



Immunohistochemical analysis of MARCH1 staining in human prostate cancer formalin fixed paraffin embedded tissue section. The section was pre-treated using heat mediated antigen retrieval with sodium citrate buffer (pH 6.0). The section was then incubated with the antibody at room temperature and detected using an HRP conjugated compact polymer system. DAB was used as the chromogen. The section was then counterstained with haematoxylin and mounted with DPX.

Anti-MARCH1 Antibody - Background

KLH-conjugated synthetic peptide encompassing a sequence within the center region of human MARCH1. The exact sequence is proprietary.