

Anti-CD252 Antibody
Rabbit polyclonal antibody to CD252
Catalog # AP60408

Specification

Anti-CD252 Antibody - Product Information

Application	WB
Primary Accession	P23510
Other Accession	P43488
Reactivity	Human, Mouse, Rat
Host	Rabbit
Clonality	Polyclonal
Calculated MW	21050

Anti-CD252 Antibody - Additional Information

Gene ID 7292

Other Names

TXGP1; Tumor necrosis factor ligand superfamily member 4; Glycoprotein Gp34; OX40 ligand; OX40L; TAX transcriptionally-activated glycoprotein 1; CD252

Target/Specificity

Recognizes endogenous levels of CD252 protein.

Dilution

WB~~WB (1/500 - 1/1000)

Format

Liquid in 0.42% Potassium phosphate, 0.87% Sodium chloride, pH 7.3, 30% glycerol, and 0.09% (W/V) sodium azide.

Storage

Store at -20 °C. Stable for 12 months from date of receipt

Anti-CD252 Antibody - Protein Information

Name TNFSF4

Synonyms TXGP1

Function

Cytokine that binds to TNFRSF4. Co-stimulates T-cell proliferation and cytokine production.

Cellular Location

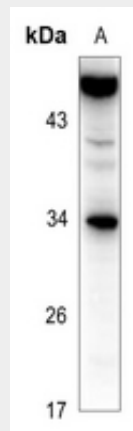
Membrane; Single-pass type II membrane protein.

Anti-CD252 Antibody - Protocols

Provided below are standard protocols that you may find useful for product applications.

- [Western Blot](#)
- [Blocking Peptides](#)
- [Dot Blot](#)
- [Immunohistochemistry](#)
- [Immunofluorescence](#)
- [Immunoprecipitation](#)
- [Flow Cytometry](#)
- [Cell Culture](#)

Anti-CD252 Antibody - Images



Western blot analysis of CD252 expression in mouse spleen (A), HEK293T (B) whole cell lysates.

Anti-CD252 Antibody - Background

KLH-conjugated synthetic peptide encompassing a sequence within the center region of human CD252. The exact sequence is proprietary.