

Anti-Thrombospondin 2 Antibody
Rabbit polyclonal antibody to Thrombospondin 2
Catalog # AP60403

Specification

Anti-Thrombospondin 2 Antibody - Product Information

Application	WB
Primary Accession	P35442
Other Accession	Q03350
Reactivity	Human, Mouse, Rat, Chicken, Bovine, Dog
Host	Rabbit
Clonality	Polyclonal
Calculated MW	129991

Anti-Thrombospondin 2 Antibody - Additional Information

Gene ID 7058

Other Names
TSP2; Thrombospondin-2

Target/Specificity
Recognizes endogenous levels of Thrombospondin 2 protein.

Dilution
WB~~WB (1/500 - 1/1000), IH (1/50 - 1/200)

Format
Liquid in 0.42% Potassium phosphate, 0.87% Sodium chloride, pH 7.3, 30% glycerol, and 0.09% (W/V) sodium azide.

Storage
Store at -20 °C. Stable for 12 months from date of receipt

Anti-Thrombospondin 2 Antibody - Protein Information

Name THBS2

Synonyms TSP2

Function
Adhesive glycoprotein that mediates cell-to-cell and cell-to- matrix interactions. Ligand for CD36 mediating antiangiogenic properties.

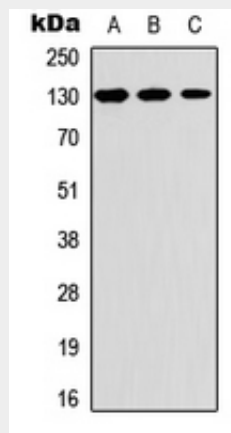
Tissue Location
High expression in intervertebral disk tissue.

Anti-Thrombospondin 2 Antibody - Protocols

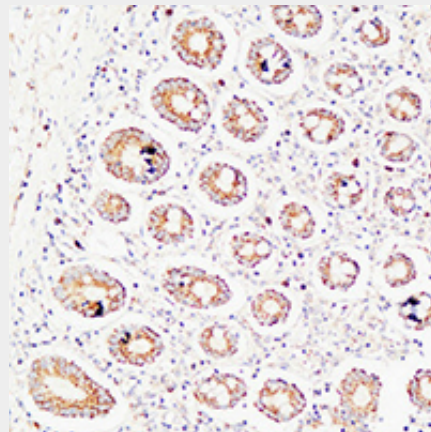
Provided below are standard protocols that you may find useful for product applications.

- [Western Blot](#)
- [Blocking Peptides](#)
- [Dot Blot](#)
- [Immunohistochemistry](#)
- [Immunofluorescence](#)
- [Immunoprecipitation](#)
- [Flow Cytometry](#)
- [Cell Culture](#)

Anti-Thrombospondin 2 Antibody - Images



Western blot analysis of Thrombospondin 2 expression in A549 (A), Raw264.7 (B), PC12 (C) whole cell lysates.



Immunohistochemical analysis of Thrombospondin 2 staining in human colon formalin fixed paraffin embedded tissue section. The section was pre-treated using heat mediated antigen retrieval with sodium citrate buffer (pH 6.0). The section was then incubated with the antibody at room temperature and detected using an HRP conjugated compact polymer system. DAB was used as the chromogen. The section was then counterstained with haematoxylin and mounted with DPX.

Anti-Thrombospondin 2 Antibody - Background

KLH-conjugated synthetic peptide encompassing a sequence within the C-term region of human

Thrombospondin 2. The exact sequence is proprietary.