

**Anti-TBX3 Antibody**  
Rabbit polyclonal antibody to TBX3  
Catalog # AP60402

### Specification

---

#### Anti-TBX3 Antibody - Product Information

Application	WB
Primary Accession	<a href="#">O15119</a>
Reactivity	Human, Mouse, Rat
Host	Rabbit
Clonality	Polyclonal
Calculated MW	79389

#### Anti-TBX3 Antibody - Additional Information

**Gene ID** 6926

#### Other Names

T-box transcription factor TBX3; T-box protein 3

#### Target/Specificity

Recognizes endogenous levels of TBX3 protein.

#### Dilution

WB~~WB (1/500 - 1/1000)

#### Format

Liquid in 0.42% Potassium phosphate, 0.87% Sodium chloride, pH 7.3, 30% glycerol, and 0.09% (W/V) sodium azide.

#### Storage

Store at -20 °C. Stable for 12 months from date of receipt

#### Anti-TBX3 Antibody - Protein Information

**Name** TBX3

#### Function

Transcriptional repressor involved in developmental processes (PubMed: [10468588](http://www.uniprot.org/citations/10468588)). Binds to the palindromic T site 5'- TTCACACCTAGGTGTGAA-3' DNA sequence, or a half-site, which are present in the regulatory region of several genes (PubMed: [12000749](http://www.uniprot.org/citations/12000749)). Probably plays a role in limb pattern formation (PubMed: [10468588](http://www.uniprot.org/citations/10468588)). Required for mammary placode induction, and maintenance of the mammary buds during development (By similarity). Involved in branching morphogenesis in both developing lungs and adult mammary glands, via negative modulation of target genes; acting redundantly with TBX2 (By similarity).

Required, together with TBX2, to maintain cell proliferation in the embryonic lung mesenchyme; perhaps acting downstream of SHH, BMP and TGFbeta signaling (By similarity). Involved in modulating early inner ear development, acting independently of, and also redundantly with, TBX2 in different subregions of the developing ear (By similarity). Acts as a negative regulator of PML function in cellular senescence (PubMed:<a href="http://www.uniprot.org/citations/22002537" target="\_blank">22002537</a>).

#### Cellular Location

Nucleus {ECO:0000255|PROSITE-ProRule:PRU00201}.

#### Tissue Location

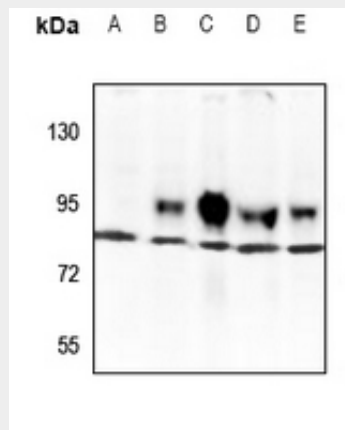
Widely expressed.

### Anti-TBX3 Antibody - Protocols

Provided below are standard protocols that you may find useful for product applications.

- [Western Blot](#)
- [Blocking Peptides](#)
- [Dot Blot](#)
- [Immunohistochemistry](#)
- [Immunofluorescence](#)
- [Immunoprecipitation](#)
- [Flow Cytometry](#)
- [Cell Culture](#)

### Anti-TBX3 Antibody - Images



Western blot analysis of TBX3 expression in CT26 (A), MEF (B), C6 (C), HEK293T (D), HepG2 (E) whole cell lysates.

### Anti-TBX3 Antibody - Background

KLH-conjugated synthetic peptide encompassing a sequence within the center region of human TBX3. The exact sequence is proprietary.