

Anti-TACSTD2 Antibody
Rabbit polyclonal antibody to TACSTD2
Catalog # AP60401

Specification

Anti-TACSTD2 Antibody - Product Information

Application	WB, IF
Primary Accession	P09758
Other Accession	Q8BGV3
Reactivity	Human, Mouse, Rat, Pig
Host	Rabbit
Clonality	Polyclonal
Calculated MW	35709

Anti-TACSTD2 Antibody - Additional Information

Gene ID 4070

Other Names

GA733-1; M1S1; TROP2; Tumor-associated calcium signal transducer 2; Cell surface glycoprotein Trop-2; Membrane component chromosome 1 surface marker 1; Pancreatic carcinoma marker protein GA733-1

Target/Specificity

Recognizes endogenous levels of TACSTD2 protein.

Dilution

WB~~WB (1/500 - 1/1000), IH (1/100 - 1/200), IF/IC (1/100 - 1/500)
IF~~WB (1/500 - 1/1000), IH (1/100 - 1/200), IF/IC (1/100 - 1/500)

Format

Liquid in 0.42% Potassium phosphate, 0.87% Sodium chloride, pH 7.3, 30% glycerol, and 0.09% (W/V) sodium azide.

Storage

Store at -20 °C. Stable for 12 months from date of receipt

Anti-TACSTD2 Antibody - Protein Information

Name TACSTD2

Synonyms GA733-1, M1S1, TROP2

Function

May function as a growth factor receptor.

Cellular Location

Membrane; Single-pass type I membrane protein.

Tissue Location

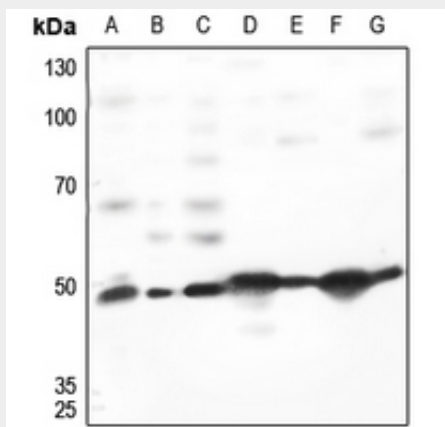
Placenta, pancreatic carcinoma cell lines.

Anti-TACSTD2 Antibody - Protocols

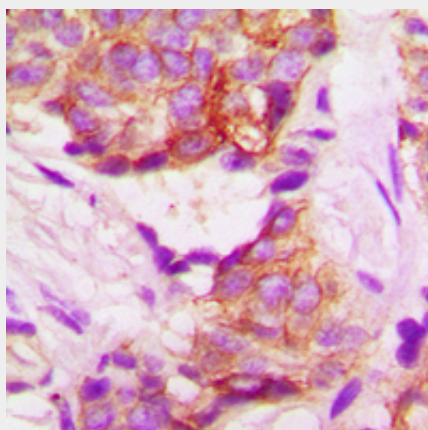
Provided below are standard protocols that you may find useful for product applications.

- [Western Blot](#)
- [Blocking Peptides](#)
- [Dot Blot](#)
- [Immunohistochemistry](#)
- [Immunofluorescence](#)
- [Immunoprecipitation](#)
- [Flow Cytometry](#)
- [Cell Culture](#)

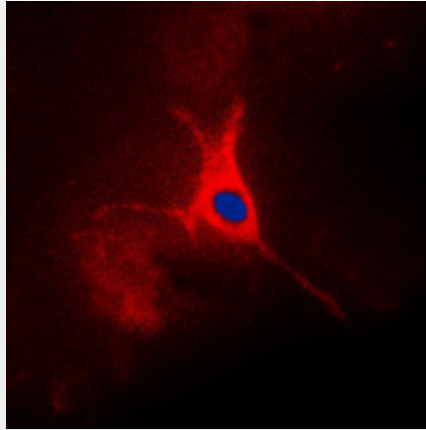
Anti-TACSTD2 Antibody - Images



Western blot analysis of TACSTD2 expression in HEK293T (A), HeLa (B), H1688 (C), mouse kidney (D), mouse lung (E), rat kidney (F), rat lung (G) whole cell lysates.



Immunohistochemical analysis of TACSTD2 staining in human lung cancer formalin fixed paraffin embedded tissue section. The section was pre-treated using heat mediated antigen retrieval with sodium citrate buffer (pH 6.0). The section was then incubated with the antibody at room temperature and detected using an HRP conjugated compact polymer system. DAB was used as the chromogen. The section was then counterstained with haematoxylin and mounted with DPX.



Immunofluorescent analysis of TACSTD2 staining in A549 cells. Formalin-fixed cells were permeabilized with 0.1% Triton X-100 in TBS for 5-10 minutes and blocked with 3% BSA-PBS for 30 minutes at room temperature. Cells were probed with the primary antibody in 3% BSA-PBS and incubated overnight at 4 °C in a humidified chamber. Cells were washed with PBST and incubated with a DyLight 594-conjugated secondary antibody (red) in PBS at room temperature in the dark. DAPI was used to stain the cell nuclei (blue).

Anti-TACSTD2 Antibody - Background

KLH-conjugated synthetic peptide encompassing a sequence within the center region of human TACSTD2. The exact sequence is proprietary.