

Anti-MCT4 Antibody
Rabbit polyclonal antibody to MCT4
Catalog # AP60395

Specification

Anti-MCT4 Antibody - Product Information

| | |
|-------------------|------------------------|
| Application | WB |
| Primary Accession | O15427 |
| Other Accession | P57787 |
| Reactivity | Human, Mouse, Rat, Pig |
| Host | Rabbit |
| Clonality | Polyclonal |
| Calculated MW | 49469 |

Anti-MCT4 Antibody - Additional Information

Gene ID 9123

Other Names

MCT4; Monocarboxylate transporter 4; MCT 4; Solute carrier family 16 member 3

Target/Specificity

Recognizes endogenous levels of MCT4 protein.

Dilution

WB~~WB (1/500 - 1/1000)

Format

Liquid in 0.42% Potassium phosphate, 0.87% Sodium chloride, pH 7.3, 30% glycerol, and 0.09% (W/V) sodium azide.

Storage

Store at -20 °C. Stable for 12 months from date of receipt

Anti-MCT4 Antibody - Protein Information

Name SLC16A3

Synonyms MCT3 {ECO:0000303|PubMed:9425115}, MCT4

Function

Proton-dependent transporter of monocarboxylates such as L- lactate and pyruvate (PubMed:11101640, PubMed:23935841, PubMed:31719150). Plays a predominant role in L-lactate efflux from highly glycolytic cells (By similarity).

Cellular Location

Cell membrane; Multi-pass membrane protein. Basolateral cell membrane; Multi-pass membrane protein. Note=Plasma membrane localization is dependent upon the BSG/MCT4 interaction (PubMed:10921872). Basolateral sorting signals (BLSS) in C-terminal cytoplasmic tail ensure its basolateral expression in polarised epithelial cells (PubMed:21199217)

Tissue Location

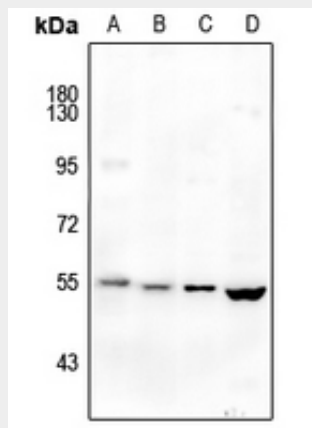
Highly expressed in skeletal muscle.

Anti-MCT4 Antibody - Protocols

Provided below are standard protocols that you may find useful for product applications.

- [Western Blot](#)
- [Blocking Peptides](#)
- [Dot Blot](#)
- [Immunohistochemistry](#)
- [Immunofluorescence](#)
- [Immunoprecipitation](#)
- [Flow Cytometry](#)
- [Cell Culture](#)

Anti-MCT4 Antibody - Images



Western blot analysis of MCT4 expression in CT26 (A), C6 (B), mouse muscle (C), rat brain (D) whole cell lysates.

Anti-MCT4 Antibody - Background

KLH-conjugated synthetic peptide encompassing a sequence within the center region of human MCT4. The exact sequence is proprietary.