

**Anti-RPL18 Antibody**  
Rabbit polyclonal antibody to RPL18  
Catalog # AP60386

### Specification

---

#### Anti-RPL18 Antibody - Product Information

Application	WB
Primary Accession	<a href="#">Q07020</a>
Other Accession	<a href="#">P35980</a>
Reactivity	Human, Mouse, Rat, Monkey, Bovine, Dog
Host	Rabbit
Clonality	Polyclonal
Calculated MW	21634

#### Anti-RPL18 Antibody - Additional Information

**Gene ID** 6141

**Other Names**

60S ribosomal protein L18

**Target/Specificity**

Recognizes endogenous levels of RPL18 protein.

**Dilution**

WB~~WB (1/500 - 1/1000), IH (1/100 - 1/200)

**Format**

Liquid in 0.42% Potassium phosphate, 0.87% Sodium chloride, pH 7.3, 30% glycerol, and 0.09% (W/V) sodium azide.

**Storage**

Store at -20 °C. Stable for 12 months from date of receipt

#### Anti-RPL18 Antibody - Protein Information

**Name** RPL18

**Function**

Component of the large ribosomal subunit (PubMed: <a href="http://www.uniprot.org/citations/12962325" target="\_blank">12962325</a>, PubMed: <a href="http://www.uniprot.org/citations/23636399" target="\_blank">23636399</a>, PubMed: <a href="http://www.uniprot.org/citations/25901680" target="\_blank">25901680</a>, PubMed: <a href="http://www.uniprot.org/citations/25957688" target="\_blank">25957688</a>, PubMed: <a href="http://www.uniprot.org/citations/32669547" target="\_blank">32669547</a>). The ribosome is a large ribonucleoprotein complex responsible for the synthesis of proteins in the cell (PubMed: <a href="http://www.uniprot.org/citations/12962325" target="\_blank">12962325</a>, PubMed: <a href="http://www.uniprot.org/citations/23636399" target="\_blank">23636399</a>, PubMed: <a href="http://www.uniprot.org/citations/25901680" target="\_blank">25901680</a>, PubMed: <a href="http://www.uniprot.org/citations/25957688" target="\_blank">25957688</a>, PubMed: <a href="http://www.uniprot.org/citations/32669547" target="\_blank">32669547</a>).

PubMed: <a href="http://www.uniprot.org/citations/25901680" target="\_blank">25901680</a>,  
PubMed: <a href="http://www.uniprot.org/citations/25957688" target="\_blank">25957688</a>,  
PubMed: <a href="http://www.uniprot.org/citations/32669547" target="\_blank">32669547</a>.

#### Cellular Location

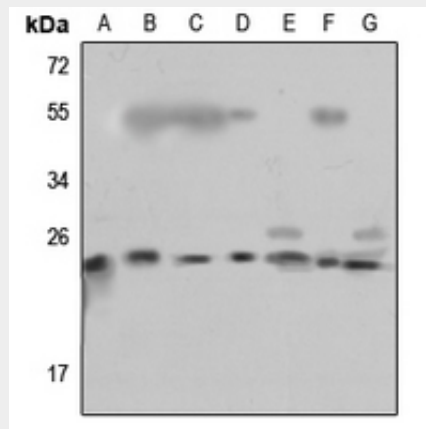
Cytoplasm, cytosol. Cytoplasm Rough endoplasmic reticulum {ECO:0000250|UniProtKB:Q95342}  
Note=Detected on cytosolic polysomes (PubMed:25957688). Detected in ribosomes that are associated with the rough endoplasmic reticulum (By similarity).  
{ECO:0000250|UniProtKB:Q95342, ECO:0000269|PubMed:25957688}

#### Anti-RPL18 Antibody - Protocols

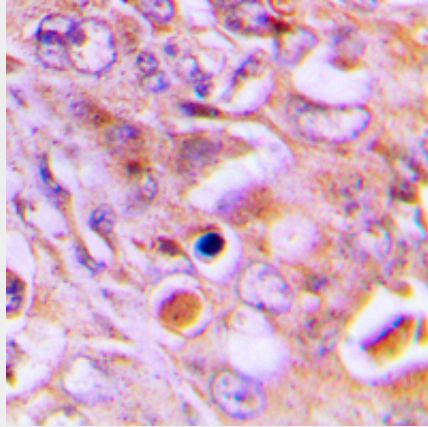
Provided below are standard protocols that you may find useful for product applications.

- [Western Blot](#)
- [Blocking Peptides](#)
- [Dot Blot](#)
- [Immunohistochemistry](#)
- [Immunofluorescence](#)
- [Immunoprecipitation](#)
- [Flow Cytometry](#)
- [Cell Culture](#)

#### Anti-RPL18 Antibody - Images



Western blot analysis of RPL18 expression in HEK293T (A), Hela (B), U2OS (C), mouse testis (D), mouse kidney (E), rat testis (F), rat kidney (G) whole cell lysates.



Immunohistochemical analysis of RPL18 staining in human lung cancer formalin fixed paraffin embedded tissue section. The section was pre-treated using heat mediated antigen retrieval with sodium citrate buffer (pH 6.0). The section was then incubated with the antibody at room temperature and detected using an HRP conjugated compact polymer system. DAB was used as the chromogen. The section was then counterstained with haematoxylin and mounted with DPX.

#### **Anti-RPL18 Antibody - Background**

KLH-conjugated synthetic peptide encompassing a sequence within the center region of human RPL18. The exact sequence is proprietary.