

Anti-G15 Antibody
Rabbit polyclonal antibody to G15
Catalog # AP60379

Specification

Anti-G15 Antibody - Product Information

Application	WB
Primary Accession	P52756
Other Accession	O91YE7
Reactivity	Human, Mouse, Rat, Bovine
Host	Rabbit
Clonality	Polyclonal
Calculated MW	92154

Anti-G15 Antibody - Additional Information

Gene ID 10181

Other Names

RNA-binding protein 5; Protein G15; Putative tumor suppressor LUCA15; RNA-binding motif protein 5; Renal carcinoma antigen NY-REN-9

Target/Specificity

Recognizes endogenous levels of G15 protein.

Dilution

WB~~WB (1/500 - 1/1000), IH (1/100 - 1/200)

Format

Liquid in 0.42% Potassium phosphate, 0.87% Sodium chloride, pH 7.3, 30% glycerol, and 0.09% (W/V) sodium azide.

Storage

Store at -20 °C. Stable for 12 months from date of receipt

Anti-G15 Antibody - Protein Information

Name RBM5

Function

Component of the spliceosome A complex. Regulates alternative splicing of a number of mRNAs. May modulate splice site pairing after recruitment of the U1 and U2 snRNPs to the 5' and 3' splice sites of the intron. May both positively and negatively regulate apoptosis by regulating the alternative splicing of several genes involved in this process, including FAS and CASP2/caspase-2. In the case of FAS, promotes exclusion of exon 6 thereby producing a soluble form of FAS that inhibits apoptosis. In the case of CASP2/caspase-2, promotes exclusion of exon 9 thereby producing a catalytically active form of CASP2/Caspase-2 that induces apoptosis.

Cellular Location

Nucleus.

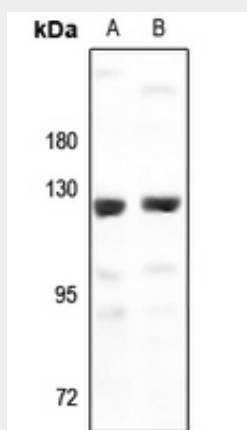
Tissue Location

Isoform 5 is widely expressed in normal tissues and is expressed at increased levels in T-leukemic cell lines

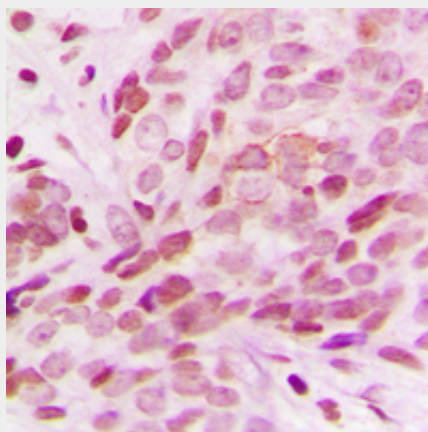
Anti-G15 Antibody - Protocols

Provided below are standard protocols that you may find useful for product applications.

- [Western Blot](#)
- [Blocking Peptides](#)
- [Dot Blot](#)
- [Immunohistochemistry](#)
- [Immunofluorescence](#)
- [Immunoprecipitation](#)
- [Flow Cytometry](#)
- [Cell Culture](#)

Anti-G15 Antibody - Images

Western blot analysis of G15 expression in K562 (A), Jurkat (B) whole cell lysates.



Immunohistochemical analysis of G15 staining in human breast cancer formalin fixed paraffin embedded tissue section. The section was pre-treated using heat mediated antigen retrieval with

sodium citrate buffer (pH 6.0). The section was then incubated with the antibody at room temperature and detected using an HRP conjugated compact polymer system. DAB was used as the chromogen. The section was then counterstained with haematoxylin and mounted with DPX.

Anti-G15 Antibody - Background

KLH-conjugated synthetic peptide encompassing a sequence within the center region of human G15. The exact sequence is proprietary.