

Anti-Protein C Antibody
Rabbit polyclonal antibody to Protein C
Catalog # AP60371**Specification**

Anti-Protein C Antibody - Product Information

Application	WB
Primary Accession	P04070
Other Accession	P33587
Reactivity	Human, Mouse, Rat
Host	Rabbit
Clonality	Polyclonal
Calculated MW	52071

Anti-Protein C Antibody - Additional Information**Gene ID** 5624**Other Names**

Vitamin K-dependent protein C; Anticoagulant protein C; Autoprothrombin IIA; Blood coagulation factor XIV

Target/Specificity

Recognizes endogenous levels of Protein C protein.

Dilution

WB~~WB (1/500 - 1/1000)

Format

Liquid in 0.42% Potassium phosphate, 0.87% Sodium chloride, pH 7.3, 30% glycerol, and 0.09% (W/V) sodium azide.

Storage

Store at -20 °C. Stable for 12 months from date of receipt

Anti-Protein C Antibody - Protein Information**Name** PROC**Function**

Protein C is a vitamin K-dependent serine protease that regulates blood coagulation by inactivating factors Va and VIIIa in the presence of calcium ions and phospholipids (PubMed:25618265). Exerts a protective effect on the endothelial cell barrier function (PubMed:25651845).

Cellular Location

Secreted. Golgi apparatus Endoplasmic reticulum

Tissue Location

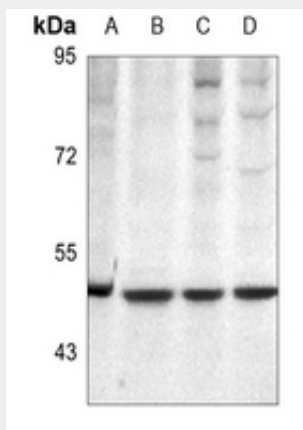
Plasma; synthesized in the liver.

Anti-Protein C Antibody - Protocols

Provided below are standard protocols that you may find useful for product applications.

- [Western Blot](#)
- [Blocking Peptides](#)
- [Dot Blot](#)
- [Immunohistochemistry](#)
- [Immunofluorescence](#)
- [Immunoprecipitation](#)
- [Flow Cytometry](#)
- [Cell Culture](#)

Anti-Protein C Antibody - Images



Western blot analysis of Protein C expression in Raw264.7 (A), HepG2 (B), Jurkat (C), HEK293T (D) whole cell lysates.

Anti-Protein C Antibody - Background

KLH-conjugated synthetic peptide encompassing a sequence within the center region of human Protein C. The exact sequence is proprietary.