

Anti-OLFML2A Antibody
Rabbit polyclonal antibody to OLFML2A
Catalog # AP60355**Specification**

Anti-OLFML2A Antibody - Product Information

Application	WB, IF
Primary Accession	Q68BL7
Reactivity	Human, Mouse, Rat
Host	Rabbit
Clonality	Polyclonal
Calculated MW	73054

Anti-OLFML2A Antibody - Additional Information**Gene ID** 169611**Other Names**

Olfactomedin-like protein 2A; Photomedin-1

Target/Specificity

Recognizes endogenous levels of OLFML2A protein.

Dilution

WB~~WB (1/500 - 1/1000), IH (1/100 - 1/200), IF/IC (1/100 - 1/500)

IF~~WB (1/500 - 1/1000), IH (1/100 - 1/200), IF/IC (1/100 - 1/500)

Format

Liquid in 0.42% Potassium phosphate, 0.87% Sodium chloride, pH 7.3, 30% glycerol, and 0.09% (W/V) sodium azide.

Storage

Store at -20 °C. Stable for 12 months from date of receipt

Anti-OLFML2A Antibody - Protein Information**Name** OLFML2A**Cellular Location**

Secreted {ECO:0000250|UniProtKB:Q8BHP7}. Note=Localizes to the podocyte major processes. Colocalized with the major process protein VIM throughout podocyte development

Tissue Location

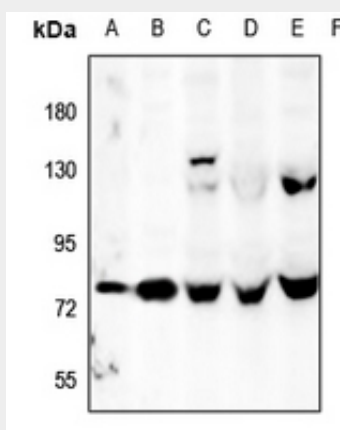
In the kidney expressed only by podocytes, wherein they localize to major processes.

Anti-OLFML2A Antibody - Protocols

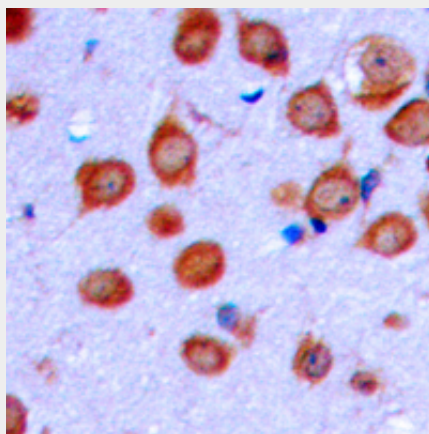
Provided below are standard protocols that you may find useful for product applications.

- [Western Blot](#)
- [Blocking Peptides](#)
- [Dot Blot](#)
- [Immunohistochemistry](#)
- [Immunofluorescence](#)
- [Immunoprecipitation](#)
- [Flow Cytometry](#)
- [Cell Culture](#)

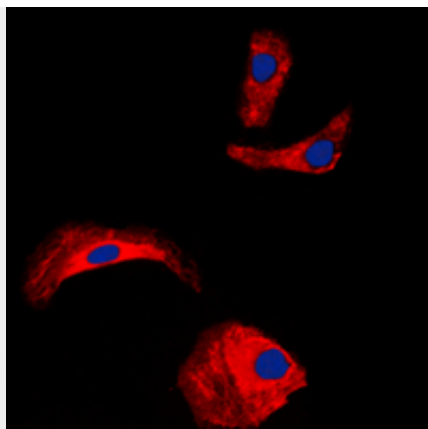
Anti-OLFML2A Antibody - Images



Western blot analysis of OLFML2A expression in rat lung (A), mouse lung (B), SGC7901 (C), HEK293T (D), MCF7 (E) whole cell lysates.



Immunohistochemical analysis of OLFML2A staining in human brain formalin fixed paraffin embedded tissue section. The section was pre-treated using heat mediated antigen retrieval with sodium citrate buffer (pH 6.0). The section was then incubated with the antibody at room temperature and detected using an HRP conjugated compact polymer system. DAB was used as the chromogen. The section was then counterstained with haematoxylin and mounted with DPX.



Immunofluorescent analysis of OLFML2A staining in HepG2 cells. Formalin-fixed cells were permeabilized with 0.1% Triton X-100 in TBS for 5-10 minutes and blocked with 3% BSA-PBS for 30 minutes at room temperature. Cells were probed with the primary antibody in 3% BSA-PBS and incubated overnight at 4 °C in a humidified chamber. Cells were washed with PBST and incubated with a DyLight 594-conjugated secondary antibody (red) in PBS at room temperature in the dark. DAPI was used to stain the cell nuclei (blue).

Anti-OLFML2A Antibody - Background

KLH-conjugated synthetic peptide encompassing a sequence within the center region of human OLFML2A. The exact sequence is proprietary.