

**Anti-pro-NGF beta Antibody**  
Rabbit polyclonal antibody to pro-NGF beta  
Catalog # AP60349

## Specification

---

### Anti-pro-NGF beta Antibody - Product Information

Application	WB
Primary Accession	<a href="#">P01138</a>
Other Accession	<a href="#">P01139</a>
Reactivity	Human, Mouse, Rat
Host	Rabbit
Clonality	Polyclonal
Calculated MW	26959

### Anti-pro-NGF beta Antibody - Additional Information

**Gene ID** 4803

#### Other Names

NGFB; Beta-nerve growth factor; Beta-NGF

#### Target/Specificity

Recognizes endogenous levels of pro-NGF beta protein.

#### Dilution

WB~~WB (1/500 - 1/1000)

#### Format

Liquid in 0.42% Potassium phosphate, 0.87% Sodium chloride, pH 7.3, 30% glycerol, and 0.09% (W/V) sodium azide.

#### Storage

Store at -20 °C. Stable for 12 months from date of receipt

### Anti-pro-NGF beta Antibody - Protein Information

**Name** NGF

**Synonyms** NGFB

#### Function

Nerve growth factor is important for the development and maintenance of the sympathetic and sensory nervous systems (PubMed: [14976160](http://www.uniprot.org/citations/14976160), PubMed: [20978020](http://www.uniprot.org/citations/20978020)). Extracellular ligand for the NTRK1 and NGFR receptors, activates cellular signaling cascades to regulate neuronal proliferation, differentiation and survival (Probable) (PubMed: [20978020](http://www.uniprot.org/citations/20978020)) target=" \_blank">20978020</a>). The immature NGF precursor (proNGF) functions as a ligand for

the heterodimeric receptor formed by SORCS2 and NGFR, and activates cellular signaling cascades that lead to inactivation of RAC1 and/or RAC2, reorganization of the actin cytoskeleton and neuronal growth cone collapse. In contrast to mature NGF, the precursor form (proNGF) promotes neuronal apoptosis (in vitro) (By similarity). Inhibits metalloproteinase-dependent proteolysis of platelet glycoprotein VI (PubMed:<a href="http://www.uniprot.org/citations/20164177" target="\_blank">20164177</a>). Binds lysophosphatidylinositol and lysophosphatidylserine between the two chains of the homodimer. The lipid-bound form promotes histamine release from mast cells, contrary to the lipid-free form (By similarity).

#### Cellular Location

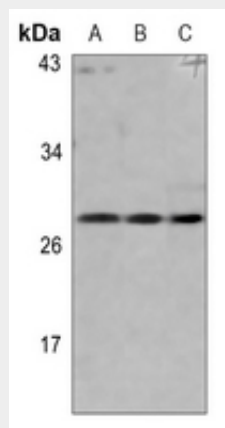
Secreted. Endosome lumen {ECO:0000250|UniProtKB:P01139}. Note=ProNGF is endocytosed after binding to the cell surface receptor formed by SORT1 and NGFR {ECO:0000250|UniProtKB:P01139}

#### Anti-pro-NGF beta Antibody - Protocols

Provided below are standard protocols that you may find useful for product applications.

- [Western Blot](#)
- [Blocking Peptides](#)
- [Dot Blot](#)
- [Immunohistochemistry](#)
- [Immunofluorescence](#)
- [Immunoprecipitation](#)
- [Flow Cytometry](#)
- [Cell Culture](#)

#### Anti-pro-NGF beta Antibody - Images



Western blot analysis of pro-NGF beta expression in H1792 (A), mouse lung (B), rat lung (C) whole cell lysates.

#### Anti-pro-NGF beta Antibody - Background

KLH-conjugated synthetic peptide encompassing a sequence within the center region of human pro-NGF beta. The exact sequence is proprietary.