

Anti-EG5 (pT926) Antibody
Rabbit polyclonal antibody to EG5 (pT926)
Catalog # AP60331

Specification

Anti-EG5 (pT926) Antibody - Product Information

Application	WB, IF
Primary Accession	P52732
Reactivity	Human, Mouse, Rat
Host	Rabbit
Clonality	Polyclonal
Calculated MW	119159

Anti-EG5 (pT926) Antibody - Additional Information

Gene ID 3832

Other Names

EG5; KNSL1; TRIP5; Kinesin-like protein KIF11; Kinesin-like protein 1; Kinesin-like spindle protein HKSP; Kinesin-related motor protein Eg5; Thyroid receptor-interacting protein 5; TR-interacting protein 5; TRIP-5

Target/Specificity

Recognizes endogenous levels of EG5 (pT926) protein.

Dilution

WB~~WB (1/500 - 1/1000), IH (1/100 - 1/200), IF/IC (1/100 - 1/500)
IF~~WB (1/500 - 1/1000), IH (1/100 - 1/200), IF/IC (1/100 - 1/500)

Format

Liquid in 0.42% Potassium phosphate, 0.87% Sodium chloride, pH 7.3, 30% glycerol, and 0.09% (W/V) sodium azide.

Storage

Store at -20 °C. Stable for 12 months from date of receipt

Anti-EG5 (pT926) Antibody - Protein Information

Name KIF11

Synonyms EG5, KNSL1, TRIP5

Function

Motor protein required for establishing a bipolar spindle and thus contributing to chromosome congression during mitosis (PubMed: [19001501](http://www.uniprot.org/citations/19001501) target="_blank">19001501, PubMed: [37728657](http://www.uniprot.org/citations/37728657) target="_blank">37728657). Required in non-mitotic cells for transport of secretory proteins from the Golgi complex to the cell surface (PubMed:

href="http://www.uniprot.org/citations/23857769" target="_blank">23857769).

Cellular Location

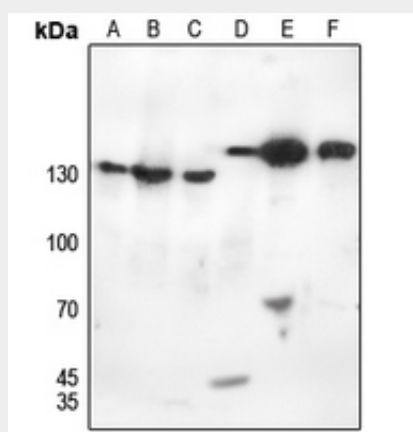
Cytoplasm. Cytoplasm, cytoskeleton, spindle pole

Anti-EG5 (pT926) Antibody - Protocols

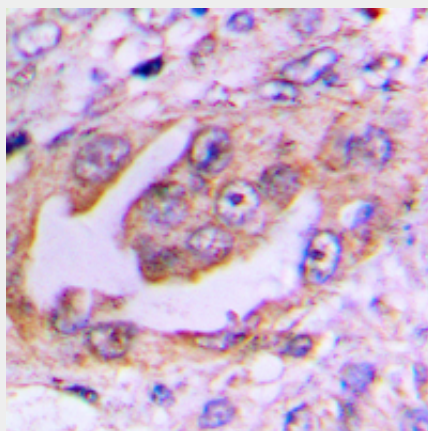
Provided below are standard protocols that you may find useful for product applications.

- [Western Blot](#)
- [Blocking Peptides](#)
- [Dot Blot](#)
- [Immunohistochemistry](#)
- [Immunofluorescence](#)
- [Immunoprecipitation](#)
- [Flow Cytometry](#)
- [Cell Culture](#)

Anti-EG5 (pT926) Antibody - Images

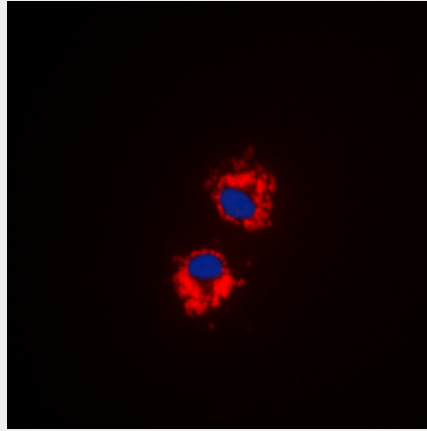


Western blot analysis of EG5 (pT926) expression in HEK293T (A), Hela (B), H446 (C), mouse kidney (D), mouse testis (E), rat testis (F) whole cell lysates.



Immunohistochemical analysis of EG5 (pT926) staining in human lung cancer formalin fixed paraffin embedded tissue section. The section was pre-treated using heat mediated antigen retrieval with sodium citrate buffer (pH 6.0). The section was then incubated with the antibody at

room temperature and detected using an HRP conjugated compact polymer system. DAB was used as the chromogen. The section was then counterstained with haematoxylin and mounted with DPX.



Immunofluorescent analysis of EG5 (pT926) staining in HepG2 cells. Formalin-fixed cells were permeabilized with 0.1% Triton X-100 in TBS for 5-10 minutes and blocked with 3% BSA-PBS for 30 minutes at room temperature. Cells were probed with the primary antibody in 3% BSA-PBS and incubated overnight at 4 °C in a humidified chamber. Cells were washed with PBST and incubated with a DyLight 594-conjugated secondary antibody (red) in PBS at room temperature in the dark. DAPI was used to stain the cell nuclei (blue).

Anti-EG5 (pT926) Antibody - Background

KLH-conjugated synthetic peptide encompassing a sequence within the C-term region of human EG5 (pT926). The exact sequence is proprietary.