

**Anti-Integrin alpha 8 HC Antibody**  
Rabbit polyclonal antibody to Integrin alpha 8 HC  
Catalog # AP60329

**Specification**

---

**Anti-Integrin alpha 8 HC Antibody - Product Information**

Application	WB
Primary Accession	<a href="#">P53708</a>
Other Accession	<a href="#">A2ARA8</a>
Reactivity	Human, Mouse, Rat, Monkey
Host	Rabbit
Clonality	Polyclonal
Calculated MW	117474

**Anti-Integrin alpha 8 HC Antibody - Additional Information**

**Gene ID** 8516

**Other Names**  
Integrin alpha-8

**Target/Specificity**  
Recognizes endogenous levels of Integrin alpha 8 HC protein.

**Dilution**  
WB~~WB (1/500 - 1/1000)

**Format**  
Liquid in 0.42% Potassium phosphate, 0.87% Sodium chloride, pH 7.3, 30% glycerol, and 0.09% (W/V) sodium azide.

**Storage**  
Store at -20 °C. Stable for 12 months from date of receipt

**Anti-Integrin alpha 8 HC Antibody - Protein Information**

**Name** ITGA8

**Function**  
Integrin alpha-8/beta-1 functions in the genesis of kidney and probably of other organs by regulating the recruitment of mesenchymal cells into epithelial structures. It recognizes the sequence R-G-D in a wide array of ligands including TNC, FN1, SPP1 TGFB1, TGFB3 and VTN. NPNT is probably its functional ligand in kidney genesis. Neuronal receptor for TNC it mediates cell-cell interactions and regulates neurite outgrowth of sensory and motor neurons.

**Cellular Location**  
Membrane; Single- pass type I membrane protein. Cell membrane

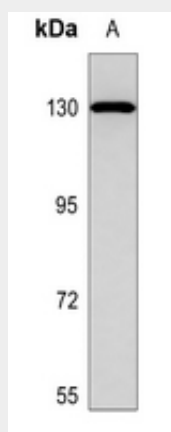
**Tissue Location**

Expressed in mesenchymal cells, including alveolar myofibroblasts, kidney mesangial cells and hepatic stellate cells and vascular and visceral smooth muscle (at protein level)

**Anti-Integrin alpha 8 HC Antibody - Protocols**

Provided below are standard protocols that you may find useful for product applications.

- [Western Blot](#)
- [Blocking Peptides](#)
- [Dot Blot](#)
- [Immunohistochemistry](#)
- [Immunofluorescence](#)
- [Immunoprecipitation](#)
- [Flow Cytometry](#)
- [Cell Culture](#)

**Anti-Integrin alpha 8 HC Antibody - Images**

Western blot analysis of Integrin alpha 8 HC expression in DLD (A) whole cell lysates.

**Anti-Integrin alpha 8 HC Antibody - Background**

KLH-conjugated synthetic peptide encompassing a sequence within the C-term region of human Integrin alpha 8 HC. The exact sequence is proprietary.