

Anti-IRX3 Antibody
Rabbit polyclonal antibody to IRX3
Catalog # AP60328

Specification

Anti-IRX3 Antibody - Product Information

Application	WB
Primary Accession	P78415
Other Accession	P81067
Reactivity	Human, Rat
Host	Rabbit
Clonality	Polyclonal
Calculated MW	52119

Anti-IRX3 Antibody - Additional Information

Gene ID 79191

Other Names

IRXB1; Iroquois-class homeodomain protein IRX-3; Homeodomain protein IRXB1; Iroquois homeobox protein 3

Target/Specificity

Recognizes endogenous levels of IRX3 protein.

Dilution

WB~~WB (1/500 - 1/1000), IH (1/100 - 1/200)

Format

Liquid in 0.42% Potassium phosphate, 0.87% Sodium chloride, pH 7.3, 30% glycerol, and 0.09% (W/V) sodium azide.

Storage

Store at -20 °C. Stable for 12 months from date of receipt

Anti-IRX3 Antibody - Protein Information

Name IRX3

Synonyms IRXB1

Function

Transcription factor involved in SHH-dependent neural patterning. Together with NKX2-2 and NKX6-1 acts to restrict the generation of motor neurons to the appropriate region of the neural tube. Belongs to the class I proteins of neuronal progenitor factors, which are repressed by SHH signals. Involved in the transcriptional repression of MNX1 in non-motor neuron cells. Acts as a regulator of energy metabolism.

Cellular Location

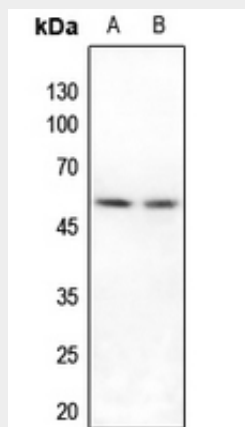
Nucleus.

Anti-IRX3 Antibody - Protocols

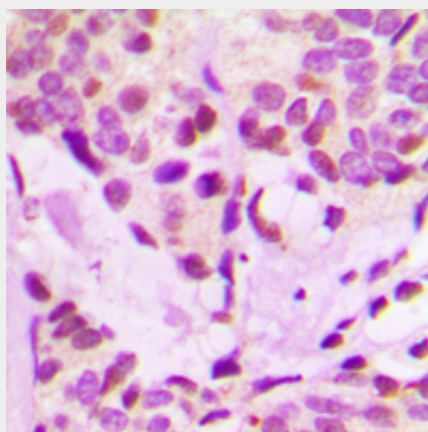
Provided below are standard protocols that you may find useful for product applications.

- [Western Blot](#)
- [Blocking Peptides](#)
- [Dot Blot](#)
- [Immunohistochemistry](#)
- [Immunofluorescence](#)
- [Immunoprecipitation](#)
- [Flow Cytometry](#)
- [Cell Culture](#)

Anti-IRX3 Antibody - Images



Western blot analysis of IRX3 expression in HeLa (A), A549 (B) whole cell lysates.



Immunohistochemical analysis of IRX3 staining in human breast cancer formalin fixed paraffin embedded tissue section. The section was pre-treated using heat mediated antigen retrieval with sodium citrate buffer (pH 6.0). The section was then incubated with the antibody at room temperature and detected using an HRP conjugated compact polymer system. DAB was used as the chromogen. The section was then counterstained with haematoxylin and mounted with DPX.

Anti-IRX3 Antibody - Background

KLH-conjugated synthetic peptide encompassing a sequence within the center region of human IRX3. The exact sequence is proprietary.