

**Anti-Inhibin alpha Antibody**  
Rabbit polyclonal antibody to Inhibin alpha  
Catalog # AP60326

## Specification

---

### Anti-Inhibin alpha Antibody - Product Information

Application	WB
Primary Accession	<a href="#">P05111</a>
Other Accession	<a href="#">Q04997</a>
Reactivity	Human, Mouse, Rat, Rabbit, Bovine, SARS
Host	Rabbit
Clonality	Polyclonal
Calculated MW	39670

### Anti-Inhibin alpha Antibody - Additional Information

**Gene ID** 3623

#### Other Names

Inhibin alpha chain

#### Target/Specificity

Recognizes endogenous levels of Inhibin alpha protein.

#### Dilution

WB~~WB (1/500 - 1/1000)

#### Format

Liquid in 0.42% Potassium phosphate, 0.87% Sodium chloride, pH 7.3, 30% glycerol, and 0.09% (W/V) sodium azide.

#### Storage

Store at -20 °C. Stable for 12 months from date of receipt

### Anti-Inhibin alpha Antibody - Protein Information

**Name** INHA

#### Function

Inhibins and activins inhibit and activate, respectively, the secretion of follitropin by the pituitary gland. Inhibins/activins are involved in regulating a number of diverse functions such as hypothalamic and pituitary hormone secretion, gonadal hormone secretion, germ cell development and maturation, erythroid differentiation, insulin secretion, nerve cell survival, embryonic axial development or bone growth, depending on their subunit composition. Inhibins appear to oppose the functions of activins.

#### Cellular Location

Secreted.

### Tissue Location

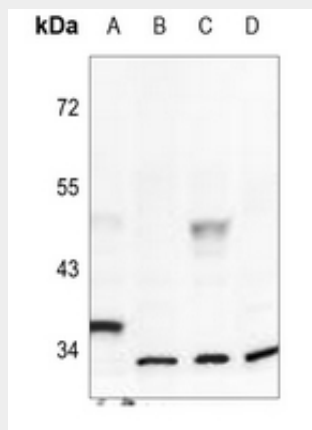
Originally found in ovary (granulosa cells) and testis (Sertoli cells), but widely distributed in many tissues including brain and placenta. In adrenal cortex expression is limited to the zona reticularis and the innermost zona fasciculata in the normal gland, extending centripetally into the zona fasciculata in hyperplasia. Also found in adrenocortical tumors. Also expressed in prostate epithelium of benign prostatic hyperplasia, in regions of basal cell hyperplasia and in nonmalignant regions of high grade prostate cancer. Only circulating inhibin B is found in male, whereas circulating inhibins A and B are found in female

### Anti-Inhibin alpha Antibody - Protocols

Provided below are standard protocols that you may find useful for product applications.

- [Western Blot](#)
- [Blocking Peptides](#)
- [Dot Blot](#)
- [Immunohistochemistry](#)
- [Immunofluorescence](#)
- [Immunoprecipitation](#)
- [Flow Cytometry](#)
- [Cell Culture](#)

### Anti-Inhibin alpha Antibody - Images



Western blot analysis of Inhibin alpha expression in rat ovary (A), PC3 (B), H9C2 (C), BV2 (D) whole cell lysates.

### Anti-Inhibin alpha Antibody - Background

KLH-conjugated synthetic peptide encompassing a sequence within the center region of human Inhibin alpha. The exact sequence is proprietary.