

Anti-CD218b Antibody
Rabbit polyclonal antibody to CD218b
Catalog # AP60324

Specification

Anti-CD218b Antibody - Product Information

Application	WB
Primary Accession	O95256
Other Accession	O9Z2B1
Reactivity	Human, Mouse, Rat
Host	Rabbit
Clonality	Polyclonal
Calculated MW	68310

Anti-CD218b Antibody - Additional Information

Gene ID 8807

Other Names

IL1R7; Interleukin-18 receptor accessory protein; IL-18 receptor accessory protein; IL-18RAcP; Accessory protein-like; AcPL; CD218 antigen-like family member B; CDw218b; IL-1R accessory protein-like; IL-1RAcPL; Interleukin-1 receptor 7; IL-1R-7; IL-1R7; Interleukin-18 receptor accessory protein-like; Interleukin-18 receptor beta; IL-18R-beta; IL-18Rbeta; CD218b

Target/Specificity

Recognizes endogenous levels of CD218b protein.

Dilution

WB~~WB (1/500 - 1/1000)

Format

Liquid in 0.42% Potassium phosphate, 0.87% Sodium chloride, pH 7.3, 30% glycerol, and 0.09% (W/V) sodium azide.

Storage

Store at -20 °C. Stable for 12 months from date of receipt

Anti-CD218b Antibody - Protein Information

Name IL18RAP ([HGNC:5989](#))

Synonyms IL1R7

Function

Within the IL18 receptor complex, does not mediate IL18- binding, but involved in IL18-dependent signal transduction, leading to NF-kappa-B and JNK activation (PubMed:14528293, PubMed:25500532, PubMed:9792649). May play a role in IL18-mediated IFNG synthesis from T-helper 1 (Th1) cells (Probable).

Cellular Location

Cell membrane; Single-pass type I membrane protein

Tissue Location

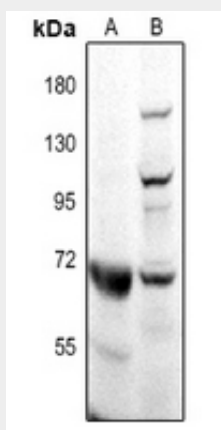
Detected in adrenal gland, bone marrow, brain, fetal brain, fetal liver, heart, kidney, lung, liver, peripheral blood leukocytes, placenta, prostate, salivary gland, skeletal muscle, spinal cord, testis, thymus, thyroid, trachea and uterus (PubMed:17897836) Strongly expressed in peripheral blood leukocytes and spleen and, to a lesser extent, in colon (PubMed:9792649). Specifically coexpressed with IL18R1 in T-helper 1 (Th1) cells (PubMed:10653850, PubMed:10925275, PubMed:11046021).

Anti-CD218b Antibody - Protocols

Provided below are standard protocols that you may find useful for product applications.

- [Western Blot](#)
- [Blocking Peptides](#)
- [Dot Blot](#)
- [Immunohistochemistry](#)
- [Immunofluorescence](#)
- [Immunoprecipitation](#)
- [Flow Cytometry](#)
- [Cell Culture](#)

Anti-CD218b Antibody - Images



Western blot analysis of CD218b expression in rat kidney (A), mouse brain (B) whole cell lysates.

Anti-CD218b Antibody - Background

KLH-conjugated synthetic peptide encompassing a sequence within the center region of human CD218b. The exact sequence is proprietary.