

**Anti-IGFBP3 Antibody**  
Rabbit polyclonal antibody to IGFBP3  
Catalog # AP60321**Specification**

---

**Anti-IGFBP3 Antibody - Product Information**

Application	<b>WB</b>
Primary Accession	<a href="#">P17936</a>
Other Accession	<a href="#">P47878</a>
Reactivity	<b>Human, Mouse, Rat, Monkey, Pig, Bovine</b>
Host	<b>Rabbit</b>
Clonality	<b>Polyclonal</b>
Calculated MW	<b>31674</b>

**Anti-IGFBP3 Antibody - Additional Information****Gene ID** 3486**Other Names**

IBP3; Insulin-like growth factor-binding protein 3; IBP-3; IGF-binding protein 3; IGFBP-3

**Target/Specificity**

Recognizes endogenous levels of IGFBP3 protein.

**Dilution**

WB~~WB (1/500 - 1/1000), IH (1/50 - 1/200)

**Format**

Liquid in 0.42% Potassium phosphate, 0.87% Sodium chloride, pH 7.3, 30% glycerol, and 0.09% (W/V) sodium azide.

**Storage**

Store at -20 °C. Stable for 12 months from date of receipt

**Anti-IGFBP3 Antibody - Protein Information****Name** IGFBP3**Synonyms** IBP3**Function**

IGF-binding proteins prolong the half-life of the IGFs and have been shown to either inhibit or stimulate the growth promoting effects of the IGFs on cell culture. They alter the interaction of IGFs with their cell surface receptors. Also exhibits IGF-independent antiproliferative and apoptotic effects mediated by its receptor TMEM219/IGFBP-3R. Inhibits the positive effect of humanin on insulin sensitivity (PubMed:<a href="http://www.uniprot.org/citations/19623253" target="\_blank">19623253</a>). Promotes testicular germ cell apoptosis (PubMed:<a href="http://www.uniprot.org/citations/19952275" target="\_blank">19952275</a>).

**Cellular Location**  
Secreted.

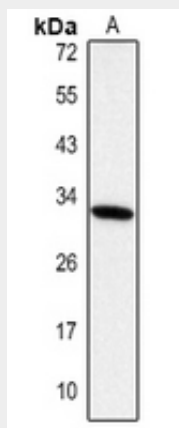
**Tissue Location**  
Expressed by most tissues. Present in plasma.

### Anti-IGFBP3 Antibody - Protocols

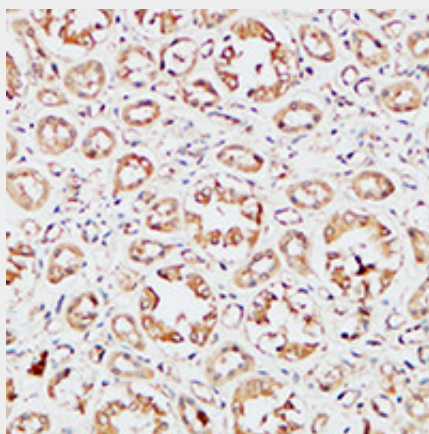
Provided below are standard protocols that you may find useful for product applications.

- [Western Blot](#)
- [Blocking Peptides](#)
- [Dot Blot](#)
- [Immunohistochemistry](#)
- [Immunofluorescence](#)
- [Immunoprecipitation](#)
- [Flow Cytometry](#)
- [Cell Culture](#)

### Anti-IGFBP3 Antibody - Images



Western blot analysis of IGFBP3 expression in mouse kidney (A) whole cell lysates.



Immunohistochemical analysis of IGFBP3 staining in human kidney formalin fixed paraffin embedded tissue section. The section was pre-treated using heat mediated antigen retrieval with sodium citrate buffer (pH 6.0). The section was then incubated with the antibody at room

temperature and detected using an HRP conjugated compact polymer system. DAB was used as the chromogen. The section was then counterstained with haematoxylin and mounted with DPX.

#### **Anti-IGFBP3 Antibody - Background**

KLH-conjugated synthetic peptide encompassing a sequence within the center region of human IGFBP3. The exact sequence is proprietary.