

Anti-Beta-glucuronidase Antibody
Rabbit polyclonal antibody to Beta-glucuronidase
Catalog # AP60302

Specification

Anti-Beta-glucuronidase Antibody - Product Information

Application	WB
Primary Accession	P08236
Reactivity	Human, Mouse, Rat, Pig, Dog
Host	Rabbit
Clonality	Polyclonal
Calculated MW	74732

Anti-Beta-glucuronidase Antibody - Additional Information

Gene ID 2990

Other Names

Beta-glucuronidase; Beta-G1

Target/Specificity

Recognizes endogenous levels of Beta-glucuronidase protein.

Dilution

WB~~WB (1/500 - 1/1000)

Format

Liquid in 0.42% Potassium phosphate, 0.87% Sodium chloride, pH 7.3, 30% glycerol, and 0.09% (W/V) sodium azide.

Storage

Store at -20 °C. Stable for 12 months from date of receipt

Anti-Beta-glucuronidase Antibody - Protein Information

Name GUSB

Function

Plays an important role in the degradation of dermatan and keratan sulfates.

Cellular Location

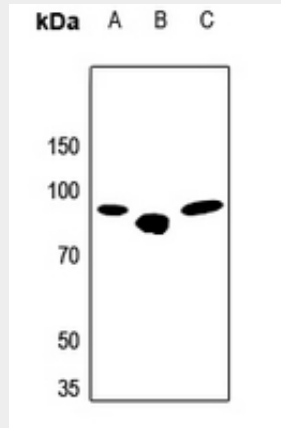
Lysosome.

Anti-Beta-glucuronidase Antibody - Protocols

Provided below are standard protocols that you may find useful for product applications.

- [Western Blot](#)
- [Blocking Peptides](#)
- [Dot Blot](#)
- [Immunohistochemistry](#)
- [Immunofluorescence](#)
- [Immunoprecipitation](#)
- [Flow Cytometry](#)
- [Cell Culture](#)

Anti-Beta-glucuronidase Antibody - Images



Western blot analysis of Beta-glucuronidase expression in Hela (A), mouse liver (B), rat lung (C) whole cell lysates.

Anti-Beta-glucuronidase Antibody - Background

KLH-conjugated synthetic peptide encompassing a sequence within the center region of human Beta-glucuronidase. The exact sequence is proprietary.