

**Anti-GATA3 (pS308) Antibody**  
**Rabbit polyclonal antibody to GATA3 (pS308)**  
**Catalog # AP60291**

**Specification**

---

**Anti-GATA3 (pS308) Antibody - Product Information**

Application	<b>WB, IF</b>
Primary Accession	<a href="#">P23771</a>
Other Accession	<a href="#">P23772</a>
Reactivity	<b>Human, Mouse, Zebrafish, Pig, Chicken, Bovine</b>
Host	<b>Rabbit</b>
Clonality	<b>Polyclonal</b>
Calculated MW	<b>47916</b>

**Anti-GATA3 (pS308) Antibody - Additional Information**

**Gene ID** 2625

**Other Names**

Trans-acting T-cell-specific transcription factor GATA-3; GATA-binding factor 3

**Target/Specificity**

Recognizes endogenous levels of GATA3 (pS308) protein.

**Dilution**

WB~~WB (1/500 - 1/1000), IF/IC (1/100 - 1/500)

IF~~WB (1/500 - 1/1000), IF/IC (1/100 - 1/500)

**Format**

Liquid in 0.42% Potassium phosphate, 0.87% Sodium chloride, pH 7.3, 30% glycerol, and 0.09% (W/V) sodium azide.

**Storage**

Store at -20 °C. Stable for 12 months from date of receipt

**Anti-GATA3 (pS308) Antibody - Protein Information**

**Name** GATA3

**Function**

Transcriptional activator which binds to the enhancer of the T-cell receptor alpha and delta genes. Binds to the consensus sequence 5'-AGATAG-3'. Required for the T-helper 2 (Th2) differentiation process following immune and inflammatory responses. Positively regulates ASB2 expression (By similarity). Coordinates macrophage transcriptional activation and UCP2-dependent metabolic reprogramming in response to IL33. Upon tissue injury, acts downstream of IL33 signaling to drive differentiation of inflammation-resolving alternatively activated macrophages.

### Cellular Location

Nucleus.

### Tissue Location

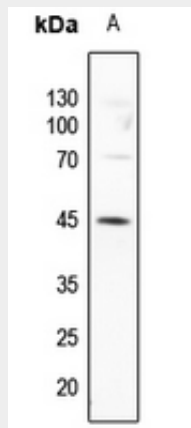
T-cells and endothelial cells.

### Anti-GATA3 (pS308) Antibody - Protocols

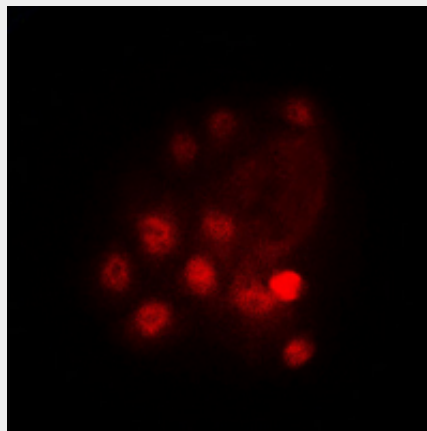
Provided below are standard protocols that you may find useful for product applications.

- [Western Blot](#)
- [Blocking Peptides](#)
- [Dot Blot](#)
- [Immunohistochemistry](#)
- [Immunofluorescence](#)
- [Immunoprecipitation](#)
- [Flow Cytometry](#)
- [Cell Culture](#)

### Anti-GATA3 (pS308) Antibody - Images



Western blot analysis of GATA3 (pS308) expression in zebrafish (A) whole cell lysates.



Immunofluorescent analysis of GATA3 (pS308) staining in HuvEc cells. Formalin-fixed cells were permeabilized with 0.1% Triton X-100 in TBS for 5-10 minutes and blocked with 3% BSA-PBS for 30 minutes at room temperature. Cells were probed with the primary antibody in 3% BSA-PBS and

incubated overnight at 4 °C in a humidified chamber. Cells were washed with PBST and incubated with a DyLight 594-conjugated secondary antibody (red) in PBS at room temperature in the dark. DAPI was used to stain the cell nuclei (blue).

#### **Anti-GATA3 (pS308) Antibody - Background**

KLH-conjugated synthetic peptide encompassing a sequence within the center region of human GATA3 (pS308). The exact sequence is proprietary.