

**Anti-GAB1 (pY627) Antibody**  
Rabbit polyclonal antibody to GAB1 (pY627)  
Catalog # AP60288

### Specification

---

#### Anti-GAB1 (pY627) Antibody - Product Information

Application	WB, IF
Primary Accession	<a href="#">O13480</a>
Other Accession	<a href="#">O9OYY0</a>
Reactivity	Human, Mouse, Rat, Bovine
Host	Rabbit
Clonality	Polyclonal
Calculated MW	76616

#### Anti-GAB1 (pY627) Antibody - Additional Information

Gene ID 2549

#### Other Names

GRB2-associated-binding protein 1; GRB2-associated binder 1; Growth factor receptor bound protein 2-associated protein 1

#### Target/Specificity

Recognizes endogenous levels of GAB1 (pY627) protein.

#### Dilution

WB~~WB (1/500 - 1/1000), IF/IC (1/100 - 1/500)  
IF~~WB (1/500 - 1/1000), IF/IC (1/100 - 1/500)

#### Format

Liquid in 0.42% Potassium phosphate, 0.87% Sodium chloride, pH 7.3, 30% glycerol, and 0.09% (W/V) sodium azide.

#### Storage

Store at -20 °C. Stable for 12 months from date of receipt

#### Anti-GAB1 (pY627) Antibody - Protein Information

Name GAB1

#### Function

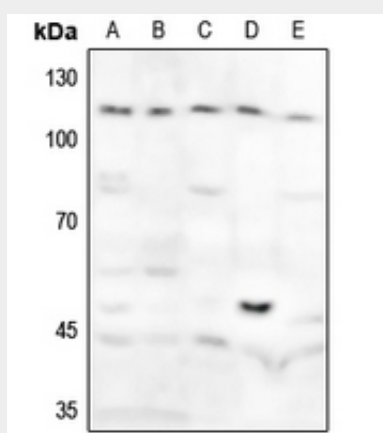
Adapter protein that plays a role in intracellular signaling cascades triggered by activated receptor-type kinases. Plays a role in FGFR1 signaling. Probably involved in signaling by the epidermal growth factor receptor (EGFR) and the insulin receptor (INSR). Involved in the MET/HGF-signaling pathway (PubMed:<a href="http://www.uniprot.org/citations/29408807" target="\_blank">29408807</a>).

## Anti-GAB1 (pY627) Antibody - Protocols

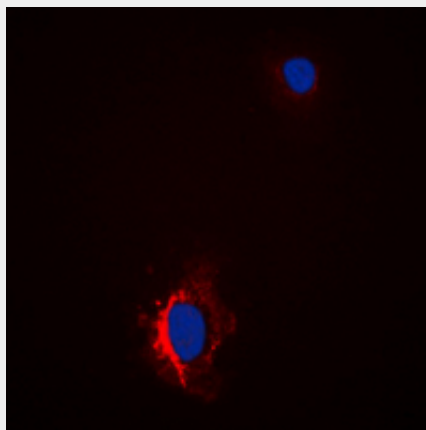
Provided below are standard protocols that you may find useful for product applications.

- [Western Blot](#)
- [Blocking Peptides](#)
- [Dot Blot](#)
- [Immunohistochemistry](#)
- [Immunofluorescence](#)
- [Immunoprecipitation](#)
- [Flow Cytometry](#)
- [Cell Culture](#)

## Anti-GAB1 (pY627) Antibody - Images



Western blot analysis of GAB1 (pY627) expression in HeLa (A), U2OS (B), mouse lung (C), mouse testis (D), rat lung (E) whole cell lysates.



Immunofluorescent analysis of GAB1 (pY627) staining in HeLa cells. Formalin-fixed cells were permeabilized with 0.1% Triton X-100 in TBS for 5-10 minutes and blocked with 3% BSA-PBS for 30 minutes at room temperature. Cells were probed with the primary antibody in 3% BSA-PBS and incubated overnight at 4 °C in a humidified chamber. Cells were washed with PBST and incubated with a DyLight 594-conjugated secondary antibody (red) in PBS at room temperature in the dark. DAPI was used to stain the cell nuclei (blue).

## Anti-GAB1 (pY627) Antibody - Background

KLH-conjugated synthetic peptide encompassing a sequence within the C-term region of human

GAB1 (pY627). The exact sequence is proprietary.