

**Anti-FGF23 Antibody**  
Rabbit polyclonal antibody to FGF23  
Catalog # AP60285

**Specification**

---

**Anti-FGF23 Antibody - Product Information**

Application	WB
Primary Accession	<a href="#">O9GZV9</a>
Other Accession	<a href="#">O9EPC2</a>
Reactivity	Human, Mouse, Rat
Host	Rabbit
Clonality	Polyclonal
Calculated MW	27954

**Anti-FGF23 Antibody - Additional Information**

Gene ID 8074

**Other Names**

HYPF; Fibroblast growth factor 23; FGF-23; Phosphatonin; Tumor-derived hypophosphatemia-inducing factor

**Target/Specificity**

Recognizes endogenous levels of FGF23 protein.

**Dilution**

WB~~WB (1/500 - 1/1000)

**Format**

Liquid in 0.42% Potassium phosphate, 0.87% Sodium chloride, pH 7.3, 30% glycerol, and 0.09% (W/V) sodium azide.

**Storage**

Store at -20 °C. Stable for 12 months from date of receipt

**Anti-FGF23 Antibody - Protein Information**

Name FGF23

Synonyms HYPF

**Function**

Regulator of phosphate homeostasis (PubMed: [11062477](http://www.uniprot.org/citations/11062477)). Inhibits renal tubular phosphate transport by reducing SLC34A1 levels (PubMed: [11409890](http://www.uniprot.org/citations/11409890)). Up-regulates EGR1 expression in the presence of KL (By similarity). Acts directly on the parathyroid to decrease PTH secretion (By similarity). Regulator of vitamin-D metabolism (PubMed: )

href="http://www.uniprot.org/citations/15040831" target="\_blank">15040831</a>). Negatively regulates osteoblast differentiation and matrix mineralization (PubMed:<a href="http://www.uniprot.org/citations/18282132" target="\_blank">18282132</a>).

#### Cellular Location

Secreted. Note=Secretion is dependent on O-glycosylation

#### Tissue Location

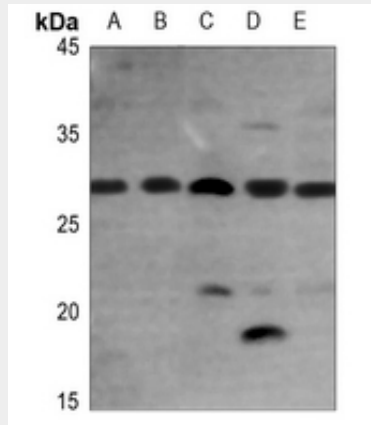
Expressed in osteogenic cells particularly during phases of active bone remodeling. In adult trabecular bone, expressed in osteocytes and flattened bone-lining cells (inactive osteoblasts)

### Anti-FGF23 Antibody - Protocols

Provided below are standard protocols that you may find useful for product applications.

- [Western Blot](#)
- [Blocking Peptides](#)
- [Dot Blot](#)
- [Immunohistochemistry](#)
- [Immunofluorescence](#)
- [Immunoprecipitation](#)
- [Flow Cytometry](#)
- [Cell Culture](#)

### Anti-FGF23 Antibody - Images



Western blot analysis of FGF23 expression in A549 (A), U2OS (B), mouse liver (C), mouse heart (D), rat liver (E) whole cell lysates.

### Anti-FGF23 Antibody - Background

KLH-conjugated synthetic peptide encompassing a sequence within the C-term region of human FGF23. The exact sequence is proprietary.