

Anti-CD142 (pS290) Antibody
Rabbit polyclonal antibody to CD142 (pS290)
Catalog # AP60283

Specification

Anti-CD142 (pS290) Antibody - Product Information

Application	WB
Primary Accession	P13726
Reactivity	Human, Mouse, Rat
Host	Rabbit
Clonality	Polyclonal
Calculated MW	33068

Anti-CD142 (pS290) Antibody - Additional Information

Gene ID 2152

Other Names

Tissue factor; TF; Coagulation factor III; Thromboplastin; CD142

Target/Specificity

Recognizes endogenous levels of CD142 (pS290) protein.

Dilution

WB~~WB (1/500 - 1/1000)

Format

Liquid in 0.42% Potassium phosphate, 0.87% Sodium chloride, pH 7.3, 30% glycerol, and 0.09% (W/V) sodium azide.

Storage

Store at -20 °C. Stable for 12 months from date of receipt

Anti-CD142 (pS290) Antibody - Protein Information

Name F3

Function

Initiates blood coagulation by forming a complex with circulating factor VII or VIIa. The [TF:VIIa] complex activates factors IX or X by specific limited proteolysis. TF plays a role in normal hemostasis by initiating the cell-surface assembly and propagation of the coagulation protease cascade.

Cellular Location

[Isoform 1]: Membrane; Single-pass type I membrane protein

Tissue Location

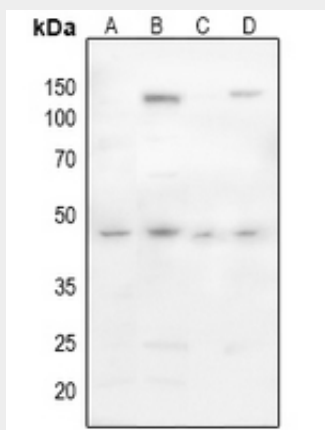
Lung, placenta and pancreas.

Anti-CD142 (pS290) Antibody - Protocols

Provided below are standard protocols that you may find useful for product applications.

- [Western Blot](#)
- [Blocking Peptides](#)
- [Dot Blot](#)
- [Immunohistochemistry](#)
- [Immunofluorescence](#)
- [Immunoprecipitation](#)
- [Flow Cytometry](#)
- [Cell Culture](#)

Anti-CD142 (pS290) Antibody - Images



Western blot analysis of CD142 (pS290) expression in mouse brain (A), mouse lung (B), mouse liver (C), rat liver (D) whole cell lysates.

Anti-CD142 (pS290) Antibody - Background

KLH-conjugated synthetic peptide encompassing a sequence within the C-term region of human CD142 (pS290). The exact sequence is proprietary.