

Anti-Endothelin 1 Antibody
Rabbit polyclonal antibody to Endothelin 1
Catalog # AP60271

Specification

Anti-Endothelin 1 Antibody - Product Information

Application	WB
Primary Accession	P05305
Other Accession	P22387
Reactivity	Human, Rat
Host	Rabbit
Clonality	Polyclonal
Calculated MW	24425

Anti-Endothelin 1 Antibody - Additional Information

Gene ID 1906

Other Names

Endothelin-1; Preproendothelin-1; PPET1

Target/Specificity

Recognizes endogenous levels of Endothelin 1 protein.

Dilution

WB~~WB (1/500 - 1/1000)

Format

Liquid in 0.42% Potassium phosphate, 0.87% Sodium chloride, pH 7.3, 30% glycerol, and 0.09% (W/V) sodium azide.

Storage

Store at -20 °C. Stable for 12 months from date of receipt

Anti-Endothelin 1 Antibody - Protein Information

Name EDN1

Function

Endothelins are endothelium-derived vasoconstrictor peptides (By similarity). Probable ligand for G-protein coupled receptors EDNRA and EDNRB which activates PTK2B, BCAR1, BCAR3 and, GTPases RAP1 and RHOA cascade in glomerular mesangial cells (PubMed: [19086031](http://www.uniprot.org/citations/19086031)). Also binds the DEAR/FBXW7-AS1 receptor (PubMed: [17446437](http://www.uniprot.org/citations/17446437)). Promotes mesenteric arterial wall remodeling via activation of ROCK signaling and subsequent colocalization of NFATC3 with F-actin filaments (By similarity). NFATC3 then translocates to the nucleus where it subsequently promotes the transcription of the smooth muscle hypertrophy and differentiation marker ACTA2 (By similarity).

Cellular Location
Secreted.

Tissue Location

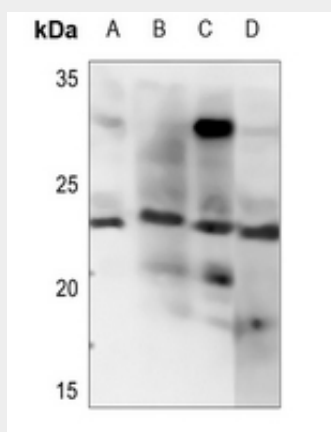
Expressed in lung, placental stem villi vessels and in cultured placental vascular smooth muscle cells

Anti-Endothelin 1 Antibody - Protocols

Provided below are standard protocols that you may find useful for product applications.

- [Western Blot](#)
- [Blocking Peptides](#)
- [Dot Blot](#)
- [Immunohistochemistry](#)
- [Immunofluorescence](#)
- [Immunoprecipitation](#)
- [Flow Cytometry](#)
- [Cell Culture](#)

Anti-Endothelin 1 Antibody - Images



Western blot analysis of Endothelin 1 expression in HEK293T (A), LOVO (B), H1792 (C), mouse testis (D) whole cell lysates.

Anti-Endothelin 1 Antibody - Background

KLH-conjugated synthetic peptide encompassing a sequence within the center region of human Endothelin 1. The exact sequence is proprietary.