

Anti-DFF40 Antibody
Rabbit polyclonal antibody to DFF40
Catalog # AP60265**Specification**

Anti-DFF40 Antibody - Product Information

Application	WB
Primary Accession	O76075
Other Accession	O54788
Reactivity	Human, Mouse, Rat
Host	Rabbit
Clonality	Polyclonal
Calculated MW	39110

Anti-DFF40 Antibody - Additional Information**Gene ID** 1677**Other Names**

CAD; DFF2; DFF40; DNA fragmentation factor subunit beta; Caspase-activated deoxyribonuclease; CAD; Caspase-activated DNase; Caspase-activated nuclease; CPAN; DNA fragmentation factor 40 kDa subunit; DFF-40

Target/Specificity

Recognizes endogenous levels of DFF40 protein.

Dilution

WB~~WB (1/500 - 1/1000)

Format

Liquid in 0.42% Potassium phosphate, 0.87% Sodium chloride, pH 7.3, 30% glycerol, and 0.09% (W/V) sodium azide.

Storage

Store at -20 °C. Stable for 12 months from date of receipt

Anti-DFF40 Antibody - Protein Information**Name** DFFB**Synonyms** CAD, DFF2, DFF40**Function**

Nuclease that induces DNA fragmentation and chromatin condensation during apoptosis. Degrades naked DNA and induces apoptotic morphology.

Cellular Location

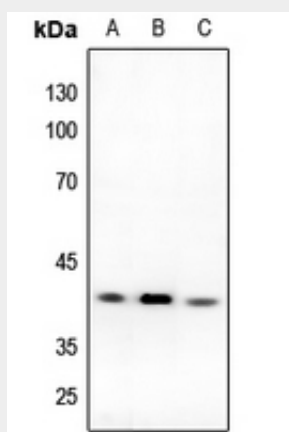
Cytoplasm. Nucleus.

Anti-DFF40 Antibody - Protocols

Provided below are standard protocols that you may find useful for product applications.

- [Western Blot](#)
- [Blocking Peptides](#)
- [Dot Blot](#)
- [Immunohistochemistry](#)
- [Immunofluorescence](#)
- [Immunoprecipitation](#)
- [Flow Cytometry](#)
- [Cell Culture](#)

Anti-DFF40 Antibody - Images



Western blot analysis of DFF40 expression in HeLa (A), mouse kidney (B), rat kidney (C) whole cell lysates.

Anti-DFF40 Antibody - Background

KLH-conjugated synthetic peptide encompassing a sequence within the N-term region of human DFF40. The exact sequence is proprietary.