

Anti-CTBP1 Antibody
Rabbit polyclonal antibody to CTBP1
Catalog # AP60259

Specification

Anti-CTBP1 Antibody - Product Information

Application	WB, IH, IF
Primary Accession	O13363
Other Accession	O88712
Reactivity	Human, Mouse, Rat, Pig
Host	Rabbit
Clonality	Polyclonal
Calculated MW	47535

Anti-CTBP1 Antibody - Additional Information

Gene ID 1487

Other Names

CTBP; C-terminal-binding protein 1; CtBP1

Target/Specificity

Recognizes endogenous levels of CTBP1 protein.

Dilution

WB~~WB (1/500 - 1/1000), IH (1/100 - 1/200), IF/IC (1/100 - 1/500)
IH~~WB (1/500 - 1/1000), IH (1/100 - 1/200), IF/IC (1/100 - 1/500)
IF~~WB (1/500 - 1/1000), IH (1/100 - 1/200), IF/IC (1/100 - 1/500)

Format

Liquid in 0.42% Potassium phosphate, 0.87% Sodium chloride, pH 7.3, 30% glycerol, and 0.09% (W/V) sodium azide.

Storage

Store at -20 °C. Stable for 12 months from date of receipt

Anti-CTBP1 Antibody - Protein Information

Name CTBP1

Synonyms CTBP

Function

Corepressor targeting diverse transcription regulators such as GLIS2 or BCL6. Has dehydrogenase activity. Involved in controlling the equilibrium between tubular and stacked structures in the Golgi complex. Functions in brown adipose tissue (BAT) differentiation.

Cellular Location

Cytoplasm. Nucleus

Tissue Location

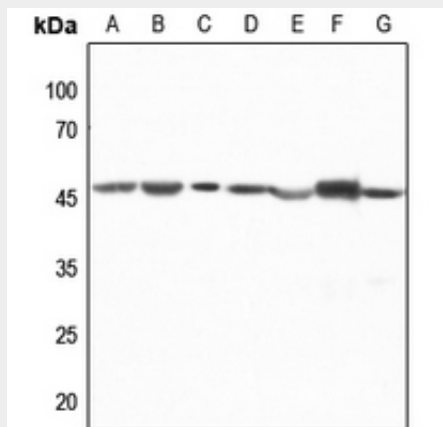
Expressed in germinal center B-cells.

Anti-CTBP1 Antibody - Protocols

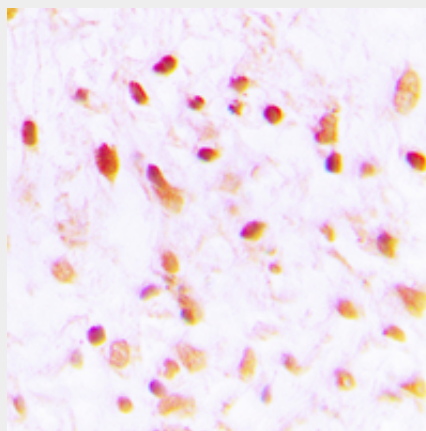
Provided below are standard protocols that you may find useful for product applications.

- [Western Blot](#)
- [Blocking Peptides](#)
- [Dot Blot](#)
- [Immunohistochemistry](#)
- [Immunofluorescence](#)
- [Immunoprecipitation](#)
- [Flow Cytometry](#)
- [Cell Culture](#)

Anti-CTBP1 Antibody - Images

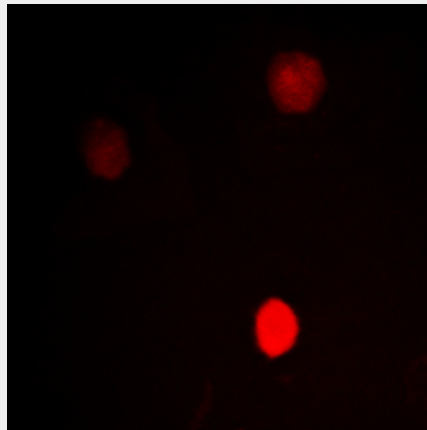


Western blot analysis of CTBP1 expression in HEK293T (A), Hela (B), H1688 (C), mouse lung (D), mouse kidney (E), rat lung (F), rat kidney (G) whole cell lysates.



Immunohistochemical analysis of CTBP1 staining in human lung cancer formalin fixed paraffin embedded tissue section. The section was pre-treated using heat mediated antigen retrieval with sodium citrate buffer (pH 6.0). The section was then incubated with the antibody at room

temperature and detected using an HRP conjugated compact polymer system. DAB was used as the chromogen. The section was then counterstained with haematoxylin and mounted with DPX.



Immunofluorescent analysis of CTBP1 staining in HeLa cells. Formalin-fixed cells were permeabilized with 0.1% Triton X-100 in TBS for 5-10 minutes and blocked with 3% BSA-PBS for 30 minutes at room temperature. Cells were probed with the primary antibody in 3% BSA-PBS and incubated overnight at 4 °C in a humidified chamber. Cells were washed with PBST and incubated with a DyLight 594-conjugated secondary antibody (red) in PBS at room temperature in the dark.

Anti-CTBP1 Antibody - Background

KLH-conjugated synthetic peptide encompassing a sequence within the C-term region of human CTBP1. The exact sequence is proprietary.