

**Anti-G-CSF Antibody**  
Rabbit polyclonal antibody to G-CSF  
Catalog # AP60257**Specification**

---

**Anti-G-CSF Antibody - Product Information**

Application	<b>WB</b>
Primary Accession	<a href="#">P09919</a>
Other Accession	<a href="#">P09920</a>
Reactivity	<b>Human, Mouse, Rat</b>
Host	<b>Rabbit</b>
Clonality	<b>Polyclonal</b>
Calculated MW	<b>22293</b>

**Anti-G-CSF Antibody - Additional Information****Gene ID** 1440**Other Names**

C17orf33; GCSF; Granulocyte colony-stimulating factor; G-CSF; Pluripoiectin; Filgrastim; Lenograstim

**Target/Specificity**

Recognizes endogenous levels of G-CSF protein.

**Dilution**

WB~~WB (1/500 - 1/1000)

**Format**

Liquid in 0.42% Potassium phosphate, 0.87% Sodium chloride, pH 7.3, 30% glycerol, and 0.09% (W/V) sodium azide.

**Storage**

Store at -20 °C. Stable for 12 months from date of receipt

**Anti-G-CSF Antibody - Protein Information****Name** CSF3**Synonyms** C17orf33, GCSF**Function**

Granulocyte/macrophage colony-stimulating factors are cytokines that act in hematopoiesis by controlling the production, differentiation, and function of 2 related white cell populations of the blood, the granulocytes and the monocytes-macrophages. This CSF induces granulocytes.

**Cellular Location**

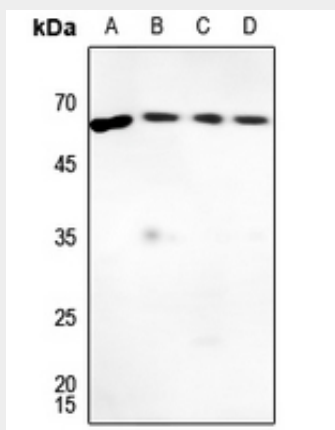
Secreted.

## Anti-G-CSF Antibody - Protocols

Provided below are standard protocols that you may find useful for product applications.

- [Western Blot](#)
- [Blocking Peptides](#)
- [Dot Blot](#)
- [Immunohistochemistry](#)
- [Immunofluorescence](#)
- [Immunoprecipitation](#)
- [Flow Cytometry](#)
- [Cell Culture](#)

## Anti-G-CSF Antibody - Images



Western blot analysis of G-CSF expression in Hela (A), mouse lung (B), mouse muscle (C), rat lung (D) whole cell lysates.

## Anti-G-CSF Antibody - Background

KLH-conjugated synthetic peptide encompassing a sequence within the center region of human G-CSF. The exact sequence is proprietary.