

Anti-CDCA2 Antibody
Rabbit polyclonal antibody to CDCA2
Catalog # AP60243

Specification

Anti-CDCA2 Antibody - Product Information

Application	WB
Primary Accession	Q69YH5
Reactivity	Human, Rat
Host	Rabbit
Clonality	Polyclonal
Calculated MW	112676

Anti-CDCA2 Antibody - Additional Information

Gene ID 157313

Other Names

Cell division cycle-associated protein 2; Recruits PP1 onto mitotic chromatin at anaphase protein; Repo-Man

Target/Specificity

Recognizes endogenous levels of CDCA2 protein.

Dilution

WB~~WB (1/500 - 1/1000), IH (1/100 - 1/200)

Format

Liquid in 0.42% Potassium phosphate, 0.87% Sodium chloride, pH 7.3, 30% glycerol, and 0.09% (W/V) sodium azide.

Storage

Store at -20 °C. Stable for 12 months from date of receipt

Anti-CDCA2 Antibody - Protein Information

Name CDCA2

Function

Regulator of chromosome structure during mitosis required for condensin-depleted chromosomes to retain their compact architecture through anaphase. Acts by mediating the recruitment of phosphatase PP1-gamma subunit (PPP1CC) to chromatin at anaphase and into the following interphase. At anaphase onset, its association with chromatin targets a pool of PPP1CC to dephosphorylate substrates.

Cellular Location

Nucleus. Note=Excluded from the nucleolus. Present in nucleoplasm throughout the G1, S and G2 stages of the cell cycle. During M phase, it becomes diffuse throughout the cell as the nuclear

membrane breaks down, and faintly accumulates later on metaphase chromatin. As the cell progresses to anaphase, it accumulates on chromatin

Tissue Location

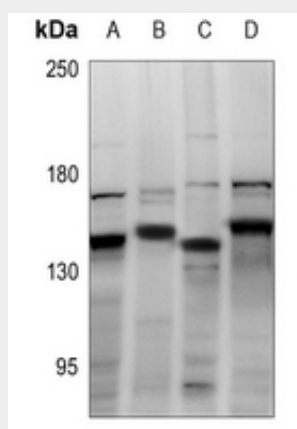
Ubiquitously expressed.

Anti-CDCA2 Antibody - Protocols

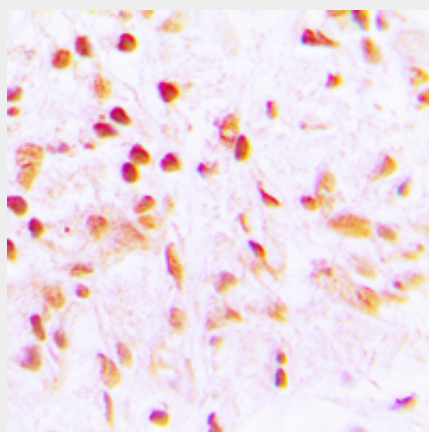
Provided below are standard protocols that you may find useful for product applications.

- [Western Blot](#)
- [Blocking Peptides](#)
- [Dot Blot](#)
- [Immunohistochemistry](#)
- [Immunofluorescence](#)
- [Immunoprecipitation](#)
- [Flow Cytometry](#)
- [Cell Culture](#)

Anti-CDCA2 Antibody - Images



Western blot analysis of CDCA2 expression in EC9706 (A), PC3 (B), C6 (C), HepG2 (D) whole cell lysates.



Immunohistochemical analysis of CDCA2 staining in human lung cancer formalin fixed paraffin embedded tissue section. The section was pre-treated using heat mediated antigen retrieval with

sodium citrate buffer (pH 6.0). The section was then incubated with the antibody at room temperature and detected using an HRP conjugated compact polymer system. DAB was used as the chromogen. The section was then counterstained with haematoxylin and mounted with DPX.

Anti-CDCA2 Antibody - Background

KLH-conjugated synthetic peptide encompassing a sequence within the center region of human CDCA2. The exact sequence is proprietary.