

Anti-CD274 Antibody
Rabbit polyclonal antibody to CD274
Catalog # AP60240

Specification

Anti-CD274 Antibody - Product Information

Application	WB
Primary Accession	O9NZQ7
Other Accession	O9EP73
Reactivity	Human, Mouse, Rat
Host	Rabbit
Clonality	Polyclonal
Calculated MW	33275

Anti-CD274 Antibody - Additional Information

Gene ID 29126

Other Names

B7H1; PDCD1L1; PDCD1LG1; PDL1; Programmed cell death 1 ligand 1; PD-L1; PDCD1 ligand 1; Programmed death ligand 1; B7 homolog 1; B7-H1; CD274

Target/Specificity

Recognizes endogenous levels of CD274 protein.

Dilution

WB~~WB (1/500 - 1/1000)

Format

Liquid in 0.42% Potassium phosphate, 0.87% Sodium chloride, pH 7.3, 30% glycerol, and 0.09% (W/V) sodium azide.

Storage

Store at -20 °C. Stable for 12 months from date of receipt

Anti-CD274 Antibody - Protein Information

Name CD274 ([HGNC:17635](#))

Function

Plays a critical role in induction and maintenance of immune tolerance to self (PubMed: 11015443, PubMed: 28813410, PubMed: 28813417, PubMed: 31399419). As a ligand for the inhibitory receptor PDCD1/PD-1, modulates the activation threshold of T-cells and limits T-cell effector response (PubMed: 11015443, PubMed: 28813410).

target="_blank">28813410, PubMed:28813417, PubMed:36727298). Through a yet unknown activating receptor, may costimulate T-cell subsets that predominantly produce interleukin-10 (IL10) (PubMed:10581077). Can also act as a transcription coactivator: in response to hypoxia, translocates into the nucleus via its interaction with phosphorylated STAT3 and promotes transcription of GSDMC, leading to pyroptosis (PubMed:32929201).

Cellular Location

Cell membrane; Single-pass type I membrane protein. Early endosome membrane; Single-pass type I membrane protein. Recycling endosome membrane; Single-pass type I membrane protein. Nucleus. Note=Associates with CMTM6 at recycling endosomes, where it is protected from being targeted for lysosomal degradation (PubMed:28813417). Translocates to the nucleus in response to hypoxia via its interaction with phosphorylated STAT3 (PubMed:32929201). [Isoform 2]: Endomembrane system; Single-pass type I membrane protein

Tissue Location

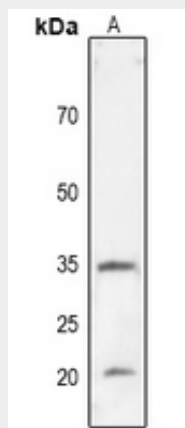
Highly expressed in the heart, skeletal muscle, placenta and lung. Weakly expressed in the thymus, spleen, kidney and liver. Expressed on activated T- and B-cells, dendritic cells, keratinocytes and monocytes.

Anti-CD274 Antibody - Protocols

Provided below are standard protocols that you may find useful for product applications.

- [Western Blot](#)
- [Blocking Peptides](#)
- [Dot Blot](#)
- [Immunohistochemistry](#)
- [Immunofluorescence](#)
- [Immunoprecipitation](#)
- [Flow Cytometry](#)
- [Cell Culture](#)

Anti-CD274 Antibody - Images



Western blot analysis of CD274 expression in mouse lung (A) whole cell lysates.

Anti-CD274 Antibody - Background

KLH-conjugated synthetic peptide encompassing a sequence within the center region of human CD274. The exact sequence is proprietary.