

Anti-Caspase 6 Antibody
Rabbit polyclonal antibody to Caspase 6
Catalog # AP60236

Specification

Anti-Caspase 6 Antibody - Product Information

Application	WB
Primary Accession	P55212
Reactivity	Human, Mouse, Rat
Host	Rabbit
Clonality	Polyclonal
Calculated MW	33310

Anti-Caspase 6 Antibody - Additional Information

Gene ID 839

Other Names

MCH2; Caspase-6; CASP-6; Apoptotic protease Mch-2

Target/Specificity

Recognizes endogenous levels of Caspase 6 protein.

Dilution

WB~~WB (1/500 - 1/1000)

Format

Liquid in 0.42% Potassium phosphate, 0.87% Sodium chloride, pH 7.3, 30% glycerol, and 0.09% (W/V) sodium azide.

Storage

Store at -20 °C. Stable for 12 months from date of receipt

Anti-Caspase 6 Antibody - Protein Information

Name CASP6 ([HGNC:1507](#))

Function

Cysteine protease that plays essential roles in programmed cell death, axonal degeneration, development and innate immunity (PubMed: 19133298, PubMed: 22858542, PubMed: 27032039, PubMed: 28864531, PubMed: 30420425, PubMed: 32298652, PubMed: 8663580). Acts as a non- canonical executioner caspase during apoptosis: localizes in the nucleus and cleaves the nuclear structural protein NUMA1 and lamin A/LMNA

thereby inducing nuclear shrinkage and fragmentation (PubMed:11953316, PubMed:17401638, PubMed:8663580, PubMed:9463409). Lamin-A/LMNA cleavage is required for chromatin condensation and nuclear disassembly during apoptotic execution (PubMed:11953316). Acts as a regulator of liver damage by promoting hepatocyte apoptosis: in absence of phosphorylation by AMP-activated protein kinase (AMPK), catalyzes cleavage of BID, leading to cytochrome c release, thereby participating in nonalcoholic steatohepatitis (PubMed:32029622). Cleaves PARK7/DJ-1 in cells undergoing apoptosis (By similarity). Involved in intrinsic apoptosis by mediating cleavage of RIPK1 (PubMed:22858542). Furthermore, cleaves many transcription factors such as NF-kappa-B and cAMP response element-binding protein/CREBBP (PubMed:10559921, PubMed:14657026). Cleaves phospholipid scramblase proteins XKR4 and XKR9 (By similarity). In addition to apoptosis, involved in different forms of programmed cell death (PubMed:32298652). Plays an essential role in defense against viruses by acting as a central mediator of the ZBP1-mediated pyroptosis, apoptosis, and necroptosis (PANoptosis), independently of its cysteine protease activity (PubMed:32298652). PANoptosis is a unique inflammatory programmed cell death, which provides a molecular scaffold that allows the interactions and activation of machinery required for inflammasome/pyroptosis, apoptosis and necroptosis (PubMed:32298652). Mechanistically, interacts with RIPK3 and enhances the interaction between RIPK3 and ZBP1, leading to ZBP1-mediated inflammasome activation and cell death (PubMed:32298652). Plays an essential role in axon degeneration during axon pruning which is the remodeling of axons during neurogenesis but not apoptosis (By similarity). Regulates B-cell programs both during early development and after antigen stimulation (By similarity).

Cellular Location

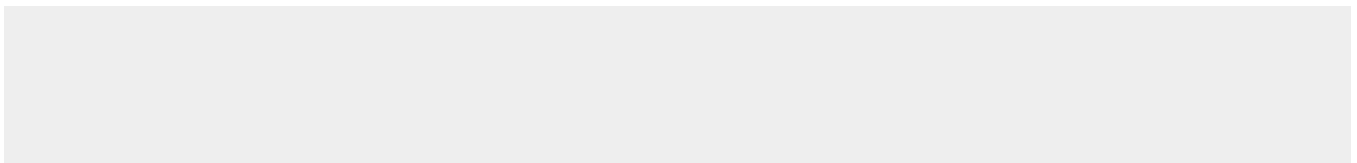
Cytoplasm. Nucleus

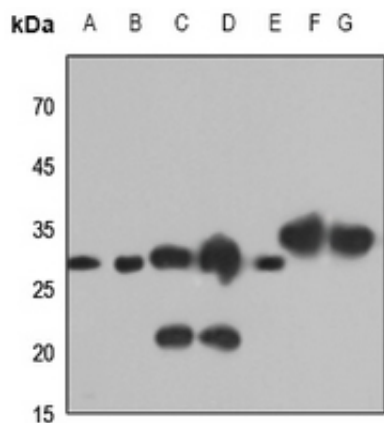
Anti-Caspase 6 Antibody - Protocols

Provided below are standard protocols that you may find useful for product applications.

- [Western Blot](#)
- [Blocking Peptides](#)
- [Dot Blot](#)
- [Immunohistochemistry](#)
- [Immunofluorescence](#)
- [Immunoprecipitation](#)
- [Flow Cytometry](#)
- [Cell Culture](#)

Anti-Caspase 6 Antibody - Images





Western blot analysis of Caspase 6 expression in HEK293T (A), HeLa (B), mouse brain (C), mouse kidney (D), mouse liver (E), rat kidney (F), rat liver (G) whole cell lysates.

Anti-Caspase 6 Antibody - Background

KLH-conjugated synthetic peptide encompassing a sequence within the N-term region of human Caspase 6. The exact sequence is proprietary.