

**Anti-Caspase 2 Antibody**  
**Rabbit polyclonal antibody to Caspase 2**  
**Catalog # AP60235**

**Specification**

---

**Anti-Caspase 2 Antibody - Product Information**

Application	<b>WB</b>
Primary Accession	<a href="#">P42575</a>
Reactivity	<b>Human, Rat</b>
Host	<b>Rabbit</b>
Clonality	<b>Polyclonal</b>
Calculated MW	<b>50685</b>

**Anti-Caspase 2 Antibody - Additional Information**

**Gene ID** 835

**Other Names**

ICH1; NEDD2; Caspase-2; CASP-2; Neural precursor cell expressed developmentally down-regulated protein 2; NEDD-2; Protease ICH-1

**Target/Specificity**

Recognizes endogenous levels of Caspase 2 protein.

**Dilution**

WB~~WB (1/500 - 1/1000), IH (1/100 - 1/200)

**Format**

Liquid in 0.42% Potassium phosphate, 0.87% Sodium chloride, pH 7.3, 30% glycerol, and 0.09% (W/V) sodium azide.

**Storage**

Store at -20 °C. Stable for 12 months from date of receipt

**Anti-Caspase 2 Antibody - Protein Information**

**Name** CASP2

**Synonyms** ICH1, NEDD2

**Function**

Is a regulator of the cascade of caspases responsible for apoptosis execution (PubMed: <a href="http://www.uniprot.org/citations/8087842" target="\_blank">8087842</a>, PubMed: <a href="http://www.uniprot.org/citations/11156409" target="\_blank">11156409</a>, PubMed: <a href="http://www.uniprot.org/citations/15073321" target="\_blank">15073321</a>). Might function by either activating some proteins required for cell death or inactivating proteins necessary for cell survival (PubMed: <a href="http://www.uniprot.org/citations/15073321" target="\_blank">15073321</a>). Associates with PIDD1 and CRADD to form the PIDDosome, a

complex that activates CASP2 and triggers apoptosis in response to genotoxic stress (PubMed:<a href="http://www.uniprot.org/citations/15073321" target="\_blank">15073321</a>).

#### Tissue Location

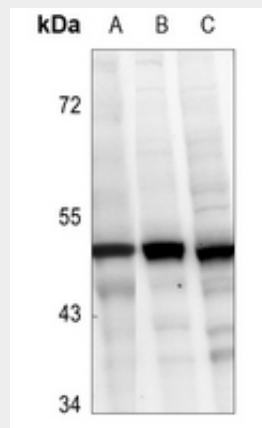
Expressed at higher levels in the embryonic lung, liver and kidney than in the heart and brain. In adults, higher level expression is seen in the placenta, lung, kidney, and pancreas than in the heart, brain, liver and skeletal muscle

#### Anti-Caspase 2 Antibody - Protocols

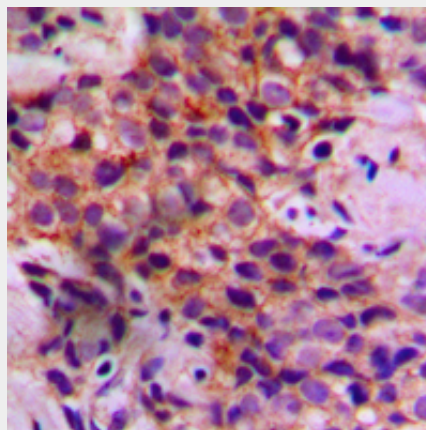
Provided below are standard protocols that you may find useful for product applications.

- [Western Blot](#)
- [Blocking Peptides](#)
- [Dot Blot](#)
- [Immunohistochemistry](#)
- [Immunofluorescence](#)
- [Immunoprecipitation](#)
- [Flow Cytometry](#)
- [Cell Culture](#)

#### Anti-Caspase 2 Antibody - Images



Western blot analysis of Caspase 2 expression in Jurkat (A), HeLa (B), PC12 (C) whole cell lysates.



Immunohistochemical analysis of Caspase 2 staining in human breast cancer formalin fixed

paraffin embedded tissue section. The section was pre-treated using heat mediated antigen retrieval with sodium citrate buffer (pH 6.0). The section was then incubated with the antibody at room temperature and detected using an HRP conjugated compact polymer system. DAB was used as the chromogen. The section was then counterstained with haematoxylin and mounted with DPX.

#### **Anti-Caspase 2 Antibody - Background**

KLH-conjugated synthetic peptide encompassing a sequence within the center region of human Caspase 2. The exact sequence is proprietary.